



جائزة الشيخ حمدان بن زايد البيئية  
SHEIKH HAMDAN BIN ZAYED  
ENVIRONMENTAL AWARD



# **Sheikh Hamdan bin Zayed Environmental Award Booklet Second Cycle 2025**

The UAE's genuine keenness to protect the environment stems from its belief in the importance of the environment and its role in achieving sustainable development. This effort began many years ago, and has grown day by day thanks to the attention paid by the wise leadership, with its foundations laid by the late Sheikh Zayed. Today, we launch the second cycle of this award to encourage excellence and creativity among individuals and institutions in the field of preserving and protecting the environment, foster initiative and leadership, and enhance interest in environmental work and compliance with relevant legislation.

In its second cycle, the Sheikh Hamdan Bin Zayed Environmental Award has expanded to encompass the entire UAE, reflecting our nation's growing commitment to fostering a culture of environmental excellence across all emirates. This significant development aims to inspire a broader spectrum of individuals and institutions to contribute to preserving our environment and ensuring sustainable development.

We aim to consolidate sustainable concepts in daily life and to provide incentives for various sectors to take environmental considerations into their action plans in a manner that does not hinder the progress of the Emirate of Abu Dhabi and helps us achieve sustainable development.

The launch of the Emirates Environmental Excellence Model (EEEM) marks a transformative milestone in this journey, offering a structured and innovative framework to recognize exceptional efforts, drive sustainable practices, and align with global environmental standards. Built upon the UAE's unique environmental vision, the Model serves as a guide to achieving meaningful, collective impact, reinforcing the UAE's position as a global leader in environmental sustainability.

The award represents an opportunity to honor individuals and entities that work diligently to protect and preserve the environment while encouraging them to lead and excel and offer innovative ideas to protect the environment. Additionally, its importance lies in supporting scientists and specialized experts who are working to find innovative and effective solutions in light of the challenges facing the environment globally. These solutions require continuous and integrated efforts in order to create innovative, practical, and scientific solutions that help protect the environment and its natural resources.

We truly hope that our efforts will be successful and that the award becomes an incentive to step up environmental action and nature preservation in our beloved country, further boosting the UAE's global leadership in this field.

---

**Hamdan bin Zayed Al Nahyan**

Ruler's Representative in Al Dhafra region

Chairman, the Environment Agency - Abu Dhabi



**سمو الشيخ حمدان بن زايد آل نهيان**

ممثل الحاكم في منطقة الظفرة

**H.H.SHEIKH HAMDAN BIN ZAYED AL NAHYAN**

RULER'S REPRESENTATIVE IN AL DHAFRAH REGION



The second cycle of the Sheikh Hamdan Bin Zayed Environmental Award marks a significant milestone in our commitment to environmental sustainability, as it now extends to encompass the entire UAE. This expansion underscores our dedication to fostering a culture of environmental excellence nationwide, inspiring individuals and organizations across all emirates to play an active role in safeguarding our natural heritage and achieving sustainable development.

To tackle complex environmental challenges and align with global sustainability standards, we developed the Emirates Environmental Excellence Model (EEEM)—a transformative framework that seamlessly integrates the UAE’s environmental vision with internationally recognized benchmarks. Anchored in the C.A.R.E. principles—Commit, Act, Research, and Engage—the Model goes beyond merely recognizing outstanding achievements but also empowers participants to innovate, collaborate, and accelerate impactful environmental change.

Through this award, we aim to drive innovation, foster collaboration, and highlight the UAE’s pioneering in addressing global environmental challenges. By celebrating excellence and encouraging meaningful action, we are confident that the award will inspire a new wave of environmental stewardship and contribute to shaping a sustainable future for generations to come.

---

**Her Excellency Dr. Shaikha Salem Al Dhaheri**

Secretary General of the Environment Agency – Abu Dhabi



# Contents

|   |            |
|---|------------|
| Introduction:   | 6          |
| About the Environment Agency – Abu Dhabi (EAD):   | 7          |
| About the Sheikh Hamdan bin Zayed Environmental Award   | 8          |
| Award Framework - Emirates Environmental Excellence Model (EEEM)  | 13         |
| Award Cycle Process and Timeline:   | 18         |
| The Award Organizational Structure, Roles & Responsibilities:   | 19         |
| How to Participate:   | 21         |
| The Award Assessment Process  | 22         |
| Document Control & Confidentiality  | 23         |
| General Eligibility:  | 24         |
| Eligibility Criteria for The Award Categories   | 25         |
| Contact Us  | 28         |
| <b>Appendices</b>   | <b>29</b>  |
| Appendix <b>A</b> : The Sheikh Hamdan bin Zayed Environmental Medal Model and Criteria                      | <b>31</b>  |
| Appendix <b>B</b> : The Sheikh Hamdan bin Zayed Award for Environmental Research Model and Criteria         | <b>57</b>  |
| Appendix <b>C</b> : The Sheikh Hamdan bin Zayed Environmental Performance Award Model and Criteria          | <b>76</b>  |
| Pillars & Weights Criteria  | <b>94</b>  |
| Appendix <b>D</b> : The Sheikh Hamdan bin Zayed Environmental Corporate Initiative Award Model and Criteria | <b>99</b>  |
| Appendix <b>E</b> : Reference   | <b>109</b> |

# 01. Introduction

As part of its commitment to safeguarding the environment and ensuring the sustainability of natural resources, the Environment Agency – Abu Dhabi (EAD) is proud to announce the launch of the second cycle of the Sheikh Hamdan Bin Zayed Environmental Award. This prestigious award, now expanded to cover all the emirates of the UAE, reflects our nation's growing dedication to fostering a culture of environmental excellence across the country.

The UAE's commitment to environmental sustainability is deeply rooted in its belief in the vital role of the environment in achieving sustainable development. This journey began many years ago under the visionary leadership of the late Sheikh Zayed bin Sultan Al Nahyan, whose legacy continues to inspire our efforts today. Through this award, EAD aims to spark creativity, innovation, and a drive for excellence among individuals and organizations across the UAE who are dedicated to preserving and protecting our environment. The award encourages bold initiatives and leadership while promoting compliance with environmental legislation and raising public awareness about the importance of environmental work.

The Sheikh Hamdan Bin Zayed Environmental Award offers a unique opportunity to honor the remarkable efforts of individuals and entities that work tirelessly to protect and sustain the environment. It also supports scientists and experts in developing innovative and effective solutions to address the environmental challenges we face today. By fostering collaboration, advancing research, and promoting practical and scientific innovation, this award aims to catalyse impactful environmental action across the UAE.

With the second cycle of the award, we aspire to recognize exceptional achievements, inspire action, and drive transformative change that contributes to the UAE's leadership in environmental sustainability. Together, we can work towards protecting our natural heritage and creating a sustainable future for generations to come.



## 02. About the Environment Agency – Abu Dhabi (EAD):

Established in 1996, the Environment Agency – Abu Dhabi (EAD) is committed to protecting and enhancing air quality, groundwater as well as the biodiversity of the desert and marine ecosystem. By partnering with other government entities, the private sector, NGOs and global environmental agencies, EAD embraces international best practice, innovation and hard work to institute effective policy measures. EAD seeks to raise environmental awareness, facilitate Environmental Sustainability and ensure environmental issues remain one of the top priorities of our national agenda.

EAD's Vision is "A sustainable, well-protected and healthy environment that enhances the quality of life"

EAD's Mission is

To protect the environment  
and promote sustainability,

through **innovative environmental management**,  
and **impact-oriented policies** and **regulations**, in  
collaboration with its partners and the broader  
community.





# 03. About the Sheikh Hamdan bin Zayed Environmental Award

## 3.1 The Award Vision:

“Pioneering in protecting the environment and sustaining natural resources through adopting best environmental practices”

## 3.2 The Award Mission:

“Enhance environmental performance and promote positive change in environmental compliance and continuous improvement to protect and preserve all elements of the environment, as well as stimulate and increase interest in environmental action”

## 3.3 The Award Objectives:



### Showcasing UAE's Leadership

Promote the UAE's achievements in environmental protection on both local and global platforms.



### Boosting Competitiveness in Environmental Management

Strengthen entities' capabilities to manage environmental risks and develop innovative solutions.



### Incentivizing Environmental Initiatives

Encourage and reward projects that promote environmental stewardship and raise public awareness.



### Supporting Research and Innovation

Foster research and innovation to address current and future environmental challenges.



### Enhancing Environmental Compliance

Improve compliance with environmental regulations and support sustainable development efforts.



### Promoting Global Best Practices

Advocate for the adoption of international best practices in environmental management.



### Raising Public Awareness

Increase public awareness and cultivate a culture of environmental responsibility through sharing success stories.



### Engaging Youth and Future Leaders

Inspire youth participation and leadership in environmental initiatives to drive sustainable change.

### 3.4 Benefits to Apply for the Award:

- ➔ The winners of the Award's categories will be announced in a prestigious ceremony, and afterwards their successes are promoted through social media platforms.
- ➔ The winners of the **Sheikh Hamdan bin Zayed Environmental Medal** will receive a medal, and a certificate of merit in the Award Ceremony, in addition to a financial reward.
- ➔ The winners of the **Sheikh Hamdan bin Zayed Award for Environmental Research** will receive a trophy and a certificate of merit in the Award Ceremony, in addition to a financial reward.
- ➔ The winners of the **Sheikh Hamdan bin Zayed Environmental Performance Award** will receive a trophy and a certificate of merit in the Award Ceremony.
- ➔ The winners of the **Sheikh Hamdan bin Zayed Environmental Corporate Initiative Award** will receive a trophy and a certificate of merit in the Award Ceremony.
- ➔ The winners will gain international visibility and get the opportunity to showcase their achievements and enhance their reputation, through:
  - Promoting their success stories and achievements by having them published on the EAD's website
  - The winners will have the opportunity to present their success stories and share their outstanding performance with others through the awareness and training sessions conducted by the Award management during the following 12 months.
- ➔ The winners' entities and institutions have the right to put the award logo on their documents, publications, website and in advertising campaigns, until the announcement of the results of the next cycle.
- ➔ The shortlisted Applicants will receive a highly valued feedback report that identifies their strengths and opportunities for improvement.

### 3.5 Target Audience for the Award:



### 3.6 The Award categories:

#### Category 1:

#### Sheikh Hamdan bin Zayed Environmental Medal

##### Subcategory 1: Environmental Changemaker Medal

Honors individuals excelling in innovation and dedication to environmental sustainability efforts across corporate, educational, volunteer, and advocacy roles.

##### Subcategory 2: Environmental Creativity Pioneer Medal

Honors pioneers behind impactful campaigns utilizing creativity and media to address environmental challenges and raise awareness.

##### Subcategory 3: Environmental Youth Advocate Medal

Honors youth contributions (ages up to 25 years old) in creating innovative environmental solutions or addressing any sustainability challenges.

##### Subcategory 4: Optimal Natural Resource User Medal

Honors individuals (e.g., fishermen, farmers, falconers) who use natural resources sustainably.



## Category 2

### Sheikh Hamdan bin Zayed Award for Environmental Research

#### Subcategory 1:

##### Environmental Research Institute

Recognizes institutions conducting impactful research aligned with local and global environmental or sustainability challenges.

Open to research across all topics related to sustainability and environmental challenges, including climate change, biodiversity, renewable energy, circular economy, pollution control, and water management.

#### Subcategory 2:

##### Environmental Research Projects

- ➔ Open to individuals, university professors, academics, master's students, PhD students, and university students submitting research that tackles any environmental or sustainability-related challenges.
- ➔ Encourages research projects that offer innovative solutions and practical applications to global and local environmental challenges.

## Category 3

### Sheikh Hamdan bin Zayed Environmental Performance Award

#### Subcategory 1: Small and Medium Entities – SME's

Awards small to medium-sized businesses (1 to 250 employees) across all sectors (private, industrial, healthcare, etc.) that demonstrate environmental leadership.







### **Subcategory 2: Large Entities**

Recognizes large organizations (251+ employees) (private, industrial, healthcare, etc.) for implementing environmental excellence.

## **Category 4**

### **Hamdan bin Zayed Environmental Corporate Initiative Award**

#### **Subcategory 1: Environmental Corporate Initiative**

- ➔ The Environmental Corporate Initiative category recognizes outstanding environmental initiatives led by organizations that contribute to sustainability and environmental responsibility. It is open to a wide range of initiatives, including environmental-related community engagement events, corporate sustainability programs, environmental awareness campaigns, environmental projects, collaborative initiatives, and any other types of initiatives that drive positive environmental impact.
- ➔ This category highlights initiatives that create meaningful environmental change, whether through direct community involvement, strategic partnerships, innovative sustainability solutions, or long-term environmental programs. It celebrates organizations that integrate environmental responsibility into their operations and actively contribute to sustainability efforts at a local or global level.

# Award Framework

## Emirates Environmental Excellence Model (EEEM)

### The Story of the Emirates Environmental Excellence Model (EEEM)

In a world where environmental challenges are growing more complex by the day, the need for a unified, global approach to sustainability has never been greater. The Emirates Environmental Excellence Model (EEEM) was born out of this urgency—a framework designed not just to recognize excellence but to inspire action, foster innovation, and create a lasting impact on the planet.

### The Vision Behind the Model

Building the EEEM was essential to establish a comprehensive and structured framework that reflects the UAE's unique environmental vision while benchmarking global best practices. The UAE has long been a leader in sustainability, with a clear commitment to preserving its natural heritage and addressing global environmental challenges. The EEEM serves as a testament to this commitment, blending the nation's strategic priorities with internationally recognized standards to create a model that is both locally relevant and globally impactful.

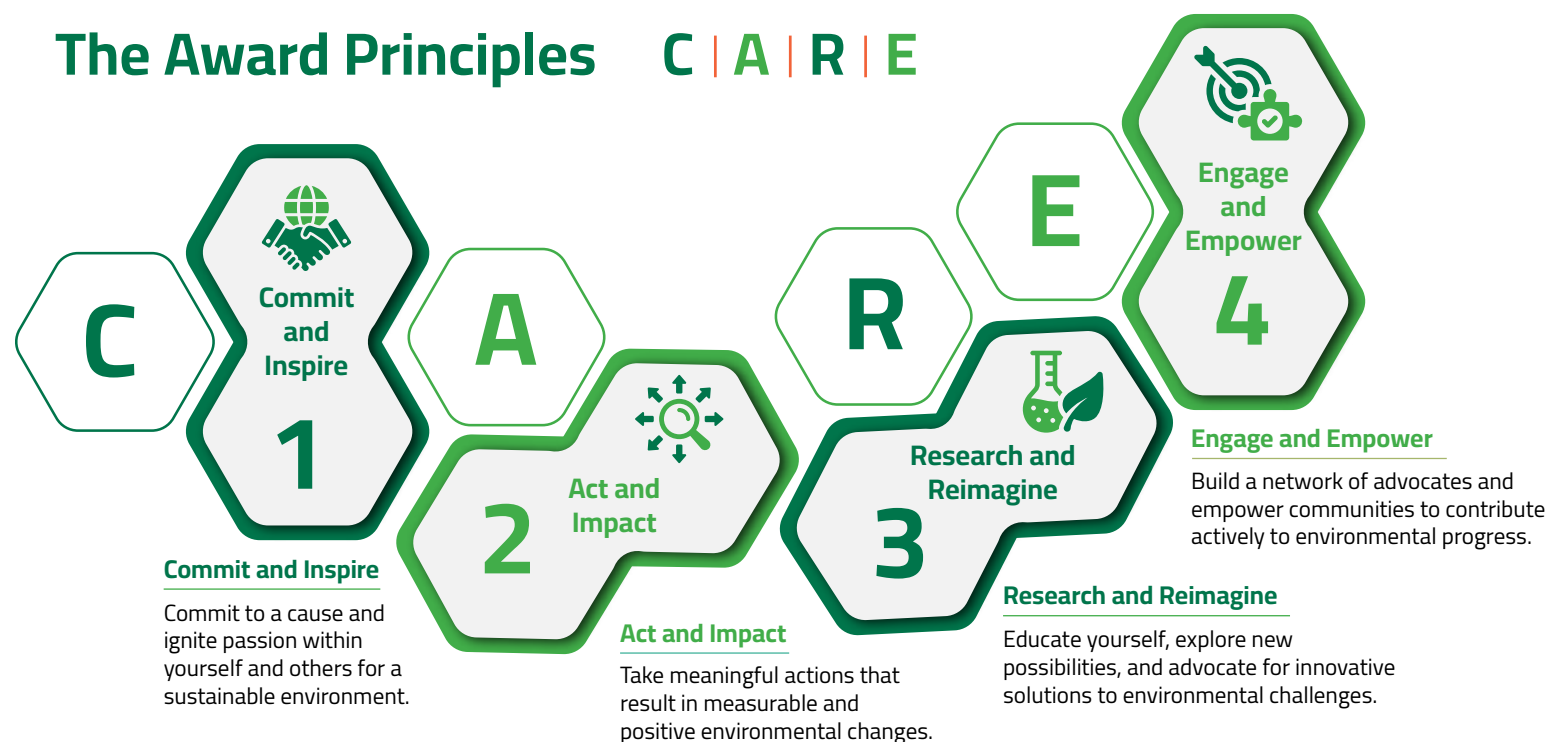
The EEEM is more than just a framework, it's a guide to recognizing outstanding environmental efforts, fostering innovation, and driving sustainable progress across various sectors. By aligning with the UAE's environmental vision and global best practices, the EEEM ensures that every initiative, no matter how small, contributes to a larger, collective impact.



## The Heart of the Framework: The C.A.R.E. Principles

At the core of the EEEM lies a simple yet powerful philosophy: C.A.R.E. These four principles are the foundation upon which the entire framework is built, guiding individuals, organizations, and communities toward meaningful environmental progress.

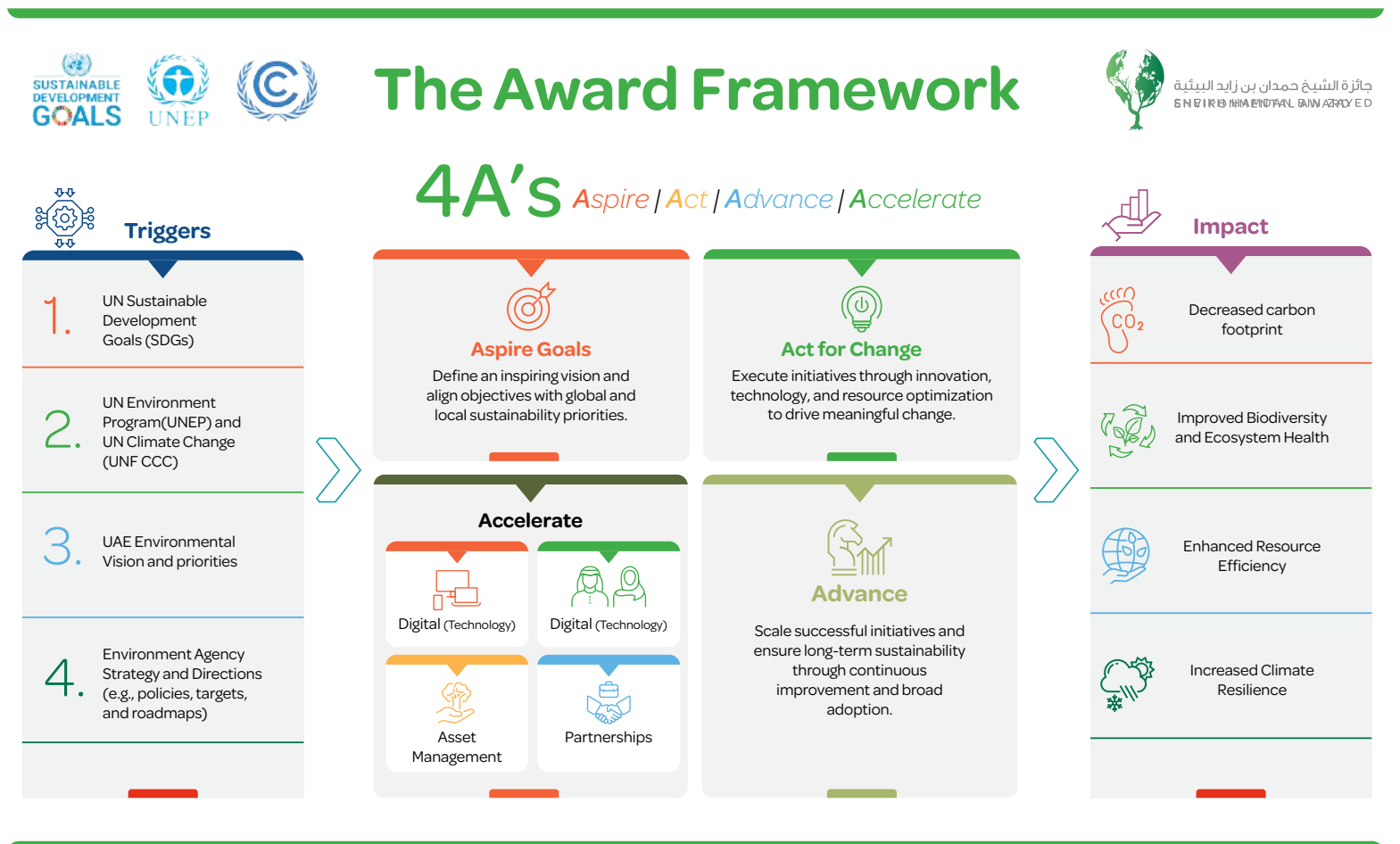
1. **Commit and Inspire:** It all begins with a spark—a commitment to a cause greater than oneself. The EEEM encourages participants to not only commit to sustainability but to ignite that same passion in others. It's about creating a ripple effect, where one inspired action leads to countless others.
2. **Act and Impact:** Commitment alone isn't enough; action is what drives change. The EEEM challenges participants to take meaningful steps, whether through innovative projects, policy changes, or community initiatives—that result in measurable, positive environmental outcomes. Every action, no matter how small, contributes to a larger impact.
3. **Research and Reimagine:** The path to sustainability is ever-evolving. The EEEM emphasizes the importance of continuous learning, exploration, and innovation. Participants are encouraged to research new solutions, reimagine what's possible, and advocate for groundbreaking ideas that address environmental challenges in ways never thought of before.
4. **Engage and Empower:** True change happens when communities come together. The EEEM fosters collaboration by building networks of advocates and empowering individuals to take an active role in environmental progress. It's about creating a movement where everyone has a voice and a part to play.



## The Journey of Change: The 4A's Framework

The EEEM isn't just a set of principles, it's a roadmap for action. The 4A's Framework (Aspire, Act, Advance, Accelerate) provides a clear path for participants to follow, ensuring that their efforts are strategic, impactful, and sustainable.

- 1. Aspire:** The journey begins with ambition. Participants are encouraged to set bold, aspirational goals that align with global standards like the UN Sustainable Development Goals (SDGs). This stage is about dreaming big and envisioning a future where environmental sustainability is at the forefront.
- 2. Act:** With goals in place, it's time to take action. The EEEM emphasizes the importance of executing initiatives through innovation, technology, and resource optimization. Whether it's reducing carbon emissions, improving biodiversity, or enhancing resource efficiency, this stage is about turning ideas into tangible results.
- 3. Advance:** Success is just the beginning. The EEEM encourages participants to scale their initiatives, ensuring that their impact is not only significant but also sustainable in the long term. This stage focuses on continuous improvement, broad adoption, and the replication of successful projects across different contexts.
- 4. Accelerate:** To truly make a difference, the pace of progress must increase. The EEEM leverages partnerships, technology, and infrastructure to accelerate environmental change. By working together and sharing resources, participants can amplify their impact and drive faster, more meaningful results.



## The Forces That Shape the Framework

The EEEM doesn't exist in isolation—it's deeply connected to global and local forces that shape its direction and priorities. These triggers and influences ensure that the framework remains relevant, impactful, and aligned with the most pressing environmental needs.


- ➔ **Global Standards:** The EEEM is guided by international benchmarks like the UN Sustainable Development Goals (SDGs), the UN Environment Program (UNEP), and the UN Climate Change (UNFCCC). These standards provide a universal language for sustainability, ensuring that the EEEM's efforts are part of a larger, global movement.
- ➔ **Local Vision:** At the same time, the EEEM is rooted in the UAE Environmental Vision and Priorities, as well as the strategies and directions set by local environmental agencies. This dual focus—global and local—ensures that the framework is both ambitious and practical.
- ➔ **Technology and Infrastructure:** In a world driven by innovation, the EEEM recognizes the critical role of digital technology and infrastructure in achieving environmental goals. From smart solutions to resource optimization, technology is a key enabler of progress.

## The Impact: A Better Future for All

The ultimate goal of the EEEM is to create a world where environmental sustainability is not just an aspiration but a reality. Through its framework, the EEEM aims to deliver tangible outcomes that benefit both people and the planet:

- ➔ **Decreased Carbon Footprint:** By promoting energy efficiency and renewable energy, the EEEM helps reduce greenhouse gas emissions and combat climate change.
- ➔ **Improved Biodiversity and Ecosystem Health:** Through conservation efforts and sustainable practices, the EEEM supports the protection and restoration of natural habitats.
- ➔ **Enhanced Resource Efficiency:** The EEEM encourages the responsible use of resources, minimizing waste and maximizing value.
- ➔ **Increased Climate Resilience:** By building adaptive capacity and promoting sustainable development, the EEEM helps communities withstand and recover from environmental shocks.





### A Model for the World

The EEEM is more than just a framework, it's a model for global environmental excellence. Designed with international benchmarks and standards in mind, the EEEM is flexible and adaptable, making it applicable to a wide range of organizations, from small businesses to large corporations. Its criteria and scoring rubric are designed to be inclusive, ensuring that everyone—regardless of size or sector—can participate and contribute to a sustainable future.

### The Call to Action

The story of the EEEM is still being written, and its success depends on the collective efforts of individuals, organizations, and communities around the world. By embracing the principles of C.A.R.E., following the 4A's Framework, and aligning with global and local priorities, we can all play a part in creating a more sustainable, resilient, and thriving planet.

# 05. Award Cycle Process and Timeline



# 06. The Award Organizational Structure, Roles & Responsibilities

The Organizational Structure, Roles & Responsibilities of the Sheikh Hamdan Bin Zayed Environmental Award is designed to ensure a transparent, efficient, and impactful evaluation process. This structure comprises four key entities: the Award Higher Committee, the Technical Committee, the Jury Committee, and the Assessor Team. Each entity plays a distinct yet interconnected role, from setting strategic regulations and developing assessment criteria to evaluating applicants and selecting winners. Together, these committees and teams uphold the Award's mission to recognize and promote excellence in environmental sustainability, fostering innovation and progress in alignment with the UAE's vision for a greener future.

## Award Higher Committee

### The Higher Committee's main tasks include:

- ➔ Setting the regulations governing the Higher Committee's mandate and submitting them to the Award Sponsor for approval.
- ➔ Proposing the draft annual budget and submitting it to the Award Sponsor.
- ➔ Approving the general eligibility criteria for Award nominations.
- ➔ Selecting the winners and consulting—when necessary—with relevant authorities for this purpose.
- ➔ Forming the Technical and Jury Committees.
- ➔ Setting the regulations governing the work of the Technical and Jury Committees, including specifying the committees' members, authorities, and procedures.
- ➔ Establishing the regulations for the Award Secretariat and defining its working procedures and regulations.
- ➔ Performing any other tasks entrusted by the Environment Agency.

## Technical Committee

### The Technical Committee's main tasks include:

- ➔ Developing the Award criteria, assessment tools, eligibility criteria, forms, Manual, and Award structure.
- ➔ Reviewing feedback reports.
- ➔ Submitting the reviewed feedback reports and the recommended Winners list to the Higher Committee.
- ➔ Documenting the Award's success stories and lessons learned.
- ➔ Managing the Award's awareness campaigns and specialized training programs.
- ➔ Overseeing the Award assessment cycle.
- ➔ Recommending potential Award Assessors and Jury Members.



- ## Jury Committee

## Assessor Team

- ➔ Evaluating applicants based on the Award criteria.
- ➔ Preparing detailed Award feedback reports.



## 07. How to Participate

- Recommending winners based on the assessment results.
- The online Application form should be completed and sent electronically through the Award website within the stated due date period.
- The Applicant can only participate in one category in the Award.
- Any incomplete Application will not be considered eligible, and the Applicant will not proceed to the assessment phase.
- All the Applications will be checked for eligibility based on the criteria stated in this manual; if the Application is eligible, the Award Team will contact the Applicant to attend an awareness session on how to write the Award submission. Non-eligible Applications will receive a notification from the Award Team.
- The eligible applications will receive a link to the platform to upload their submission, which the award team will complete within the due date.
- The Assessors will conduct a desktop review of the submissions and choose the shortlisted Applications.
- The Award Team will contact the shortlisted Applicants to go further with the assessment through the interview for the Medal and Research categories and site visit assessment for the Performance category.
- The Assessors will conduct the interviews/ site visit assessment, where the Applicant should be ready with a short presentation describing the effort exerted toward Environmental Sustainability based on the Award Model and Criteria.
- The Winners will be announced in a prestigious ceremony.
- The shortlisted Applicants will receive a valuable feedback report on their strengths and areas for improvement.
- The Winners' 'success stories' will be published on the EAD website and social media.
- The Winners will be invited to participate in the awareness sessions, seminars, and conferences conducted by EAD.

# 08. The Award Assessment Process



The applicant will register their intention to apply through the award website.



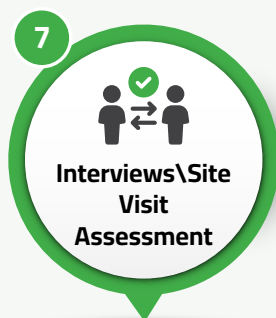
The award team will check the eligibility of the applications.



The applicant will submit the application through the Award website.



The assessors will conduct a desktop review of the submission, and decide on the shortlisted applicants.



The assessors will conduct a site visit assessment \ interview for each shortlisted applicant.

Based on the assessment the assessors will give a score and provide the award team with the scores ranking and recommendation of the top three winners.



The assessors will prepare a presentation on their assessment process, the scoring, and the recommended top three applicants.

The assessors will present their findings to the jury in a one-hour meeting.  
The jury will submit the results and the recommended winners list to Award Higher Committee for approval.



The Award Higher Committee will approve the winner list.

The winners will be announced and recognized in a prestigious ceremony.

All shortlisted submissions are entitled to receive a feedback report.



## 09. Document Control & Confidentiality

- ➔ All information received by the Award management team shall be handled with confidentiality, and any information viewed during the assessment process will be handled with the utmost care, attention, and confidentiality.
- ➔ By applying for the Award, the Applicant gives full authorization to the Award management team to archive the submitted content and use it in their publications.
- ➔ The Award Management Team, with the agreement of the Winner(s), might use part of the submission content in their awareness sessions, and success stories published on their website, and social media.





# 10. General Eligibility

## Applicant Requirements:

- Applicants must operate within the UAE and comply with all applicable national regulations and award criteria.
- Applicants can only apply to one category and cannot submit the same project for multiple categories.
- Winners from Previous cycle are not Eligible to apply for this cycle.
- Entities with subsidiaries or branches within the UAE may participate through only one branch or subsidiary.

## Initiatives Requirements:

- The Initiative must demonstrate tangible results achieved over a period of at least one year.
- The Initiative launch date must not exceed 4 years from the date of application.

## Submission Guidelines:

- Applicants must complete the online application form and submit all required documentation through the official award website within the announced deadlines.
- Applications must include valid supporting documents to prove the applicant's status, such as ID documents, authorization letters, or business licenses (e.g., commercial or registration license).
- Incomplete applications or those submitted after the deadline will not be considered.

## Content Usage and Authorization:

By submitting an application, the applicant authorizes the award management team to archive, publish, or use submitted content in specific publications. The applicant cannot request the recovery of submitted content or restrict its use for publication or sharing.

## Compliance:

- Applicants must adhere to all specified criteria for their selected category and sub-category.
- Applications that do not meet the eligibility requirements or provide incomplete documentation will be disqualified.

# 11. Eligibility Criteria for The Award Categories

## 11.1. Sheikh Hamdan bin Zayed Environmental Medal

### General Eligibility:

**The applicant must be a resident working in the UAE.**

- The applicant must have a proven record of tangible environmental achievements or contributions over the past 3 years.
- Tangible contributions must be made toward protecting, regenerating, or restoring the environment.

### Sub-Categories:

#### Environmental Changemaker Medal

- Demonstrated efforts in environmental sustainability within corporate, educational, volunteer, or advocacy roles
- Consistent dedication to environmental sustainability efforts across various role.
- Must be clearly associated with at least one implemented environmental initiative in the UAE.

#### Environmental Creativity Pioneer Medal

- Must have organized or Created at least one impactful campaign, art, Exhibition, music using creativity and media to address environmental challenges in the last 2 years.
- Demonstrated success in raising awareness about environmental issues through creative means

#### Environmental Youth Advocate Medal (up to 25 years).

- Contributions should demonstrate innovation and practical application in addressing environmental challenges or promoting sustainability.
- Evidence of participation in projects, campaigns, or initiatives with measurable outcomes is required.

#### Optimal Natural Resource User Medal:

- The applicant must have relevant permits or licenses (e.g., fishing license, falconry license).

## 11.2. Sheikh Hamdan bin Zayed Award for Environmental Research

### Environmental Research Institute:

- ➔ Must demonstrate several research successes in environmental sustainability.

### Research must directly or indirectly address environmental challenges in the UAE.

- ➔ The institute must have operated in the UAE for at least five years.
- ➔ Research programs must undergo assessment and further development.
- ➔ N.B. The assessment of the Institute for this Award is NOT about assessing the Research Institute as if it were applying, for instance, as a role model organization from a holistic perspective of looking at all its operations. Instead, it is about assessing whether the Research Institute's approach to managing research programs and scientific studies is leading-edge/world-class when it comes to delivering outstanding projects/programs in the field of Environmental Sustainability.

### Environmental Research Projects:

- ➔ The candidate(s) should be the author(s) of the research.
- ➔ Applications from co-authored projects are welcome provided all authors meet the eligibility criteria for residency in UAE.
- ➔ Authors must be residents of A UAE (co-authored projects are allowed).

### Research must:

- ➔ Address environmental challenges in UAE.
- ➔ Be published and peer-reviewed, with no more than five years since its first publication.
- ➔ Show clear impact and practical application on environmental sustainability. The research findings and recommendations can be applied and have a clear impact on Environmental Sustainability and Environmental Management in UAE.

### Priority given to research published in credible journals.



### 11.3. Sheikh Hamdan bin Zayed Environmental Performance Award

#### General Eligibility:

- Must hold a valid **UAE Industry/Trade License** issued In UAE
- **Environmental Permits by MOCCAE:** These permits cover a range of activities, including waste management, air quality control, and industrial operations
- **Local Environmental Permits:** Each emirate may have specific requirements.
- Entities with subsidiaries or branches within the UAE may participate through only one branch or subsidiary.

#### Small and Medium Entities (SME's):

- Must be classified as a small to medium entity based on UAE business size standards.

#### Large Entities:

- Must be classified as a large entity based on UAE business size standards.

### 11.4. Sheikh Hamdan bin Zayed Environmental Corporate Initiative Award

#### General Eligibility:

- Open to private, public, or semi-government entities operating in the UAE.
- Must demonstrate clear and measurable outcomes in areas such as conservation, waste reduction, pollution control, or promoting sustainable practices.
- Initiatives should have been completed or ongoing, with a significant portion of implementation achieved within the past 4 years.





## 12. Contact Us

For further information about the Sheikh Hamdan bin Zayed Environmental Award Recognition Program

Please visit our website: [www.ead.gov.ae](http://www.ead.gov.ae)

Alternatively, you can contact us on

Tel: +9712 693-4764

Email: [SHEA@ead.gov.ae](mailto:SHEA@ead.gov.ae)

Stay updated with our latest news! Click below to follow, like and subscribe:





# Appendices









# Appendix A:

## The Sheikh Hamdan bin Zayed Environmental Medal Model and Criteria

### Subcategory 1:

#### Environmental Changemaker Medal Criteria

-  Environmental Passion and Commitment to Sustainability
-  Creativity and Innovation
-  Influence, Results and Impact

#### Criterion 1:

Environmental Passion and  
Commitment to Sustainability

30%

This criterion evaluates how passionate the participant is about addressing environmental challenges including societal awareness, green practices and environmental impact. This criterion focuses on efforts, achievements and recognitions.

- ➔ Provide examples that showcase a deep commitment to environmental causes, including active involvement in initiatives, raising awareness, or advocacy or leadership efforts.
- ➔ Highlight how the candidate's actions align with national and international environmental strategies, such as UAE Environmental Directions or the UN Sustainable Development Goals (SDGs).
- ➔ Describe how the candidate has motivated individuals or groups to actively participate in sustainability initiatives, creating a broader influence that encourages widespread environmental action.
- ➔ Provide evidence of specialized learning and education undertaken through academic or professional programs, or participation in national and international events, that enhance knowledge and expertise in environmental sciences.
- ➔ Showcase voluntary contributions to environmental professional societies, including active participation in events, initiatives, or other activities that advance environmental sustainability.

## Criterion 2: Creativity and Innovation

---

# 30%

This criterion evaluates the originality and inventiveness of solutions or approaches employed to address environmental challenges. It focuses on the targeted level of innovation as well as ideation, implementation and documentation.

- ➔ Provision of approaches and solutions to address current and future environmental challenges, considering creativity and out-of-the-box thinking.
- ➔ Highlight the process of generating ideas and suggestions using reliable methodologies and best practices, showcasing a structured and forward-thinking approach to solving environmental challenges.
- ➔ Demonstrate how ideas were effectively implemented, with a focus on resource acquisition and overcoming barriers to execution, to ensure innovative solutions were brought to life successfully.
- ➔ Showcase the documentation of innovative works through publications, intellectual properties, or patents, emphasizing their originality and their contribution to addressing key environmental issues.

## Criterion 3: Influence, Results and Impact

---

# 40%

This criterion explores qualitative and quantitative results, with focus on magnitude of the societal and environmental impact and how the participant's efforts contributed to the broader environmental strategies. Sustainability of positive effects is, also, considered.

- ➔ Showcase how efforts have successfully raised environmental awareness, mobilized collective action, and fostered positive cultural shifts within communities or organizations.
- ➔ Highlight tangible and measurable outcomes achieved through initiatives, demonstrating significant contributions to environmental sustainability and related goals.
- ➔ Assess how the actions directly contributed to achieving key national and international environmental objectives, reinforcing sustainability priorities.
- ➔ Provide evidence of achieving individual accomplishments, including international recognitions, certificates of acknowledgment, and distinguished honors for the candidate exceptional efforts in environmental initiatives.
- ➔ Demonstrate how current efforts drive widespread adoption, expansion, and influence on national and international platforms, inspiring broader participation and action, such as creating models or programs that were later adopted by other organizations or regions.

# Assessment Tool

## Passion and Achievements - Rating Scale (1-2)

| Assessment Elements                                  | 25% - 0%  | 50% - 26%   | 75% - 51%   | 100% - 76%   |
|--|---|---|---|--|
| Commitment to Environmental Causes                   | Minimal or no evidence of active involvement in environmental causes. Participation is sporadic and lacks tangible outcomes or measurable impact.                           | Moderate involvement in environmental causes is evident, including occasional participation in initiatives or advocacy efforts, but contributions lack consistency or significant visibility. | Strong commitment demonstrated through consistent and impactful involvement in environmental initiatives, raising awareness, and advocacy efforts that contribute meaningfully to environmental sustainability. | Exceptional passion and dedication to environmental causes, showcased through sustained and transformative involvement in impactful initiatives, leading awareness campaigns, and advocacy efforts that set benchmarks for environmental stewardship and community engagement. |
| Alignment with National and International Strategies | Limited or no alignment with national or international environmental strategies. Actions lack strategic relevance or measurable outcomes.                                   | Moderate alignment with national or international strategies, such as UAE Environmental Directions or SDGs. Efforts demonstrate potential but lack depth or measurable impact.                | Clear alignment with national and international strategies. Contributions are impactful and demonstrate a meaningful commitment to achieving broader sustainability goals.                                      | Exceptional alignment with global and national strategies. Contributions significantly advance key sustainability objectives, showcasing a visionary approach to environmental challenges.   |
| Motivating Broader Participation                     | Limited or no evidence of motivating others to participate in sustainability initiatives. Influence is restricted to personal efforts without broader community engagement. | Moderate ability to inspire and motivate others, leading to localized or small-scale participation in sustainability initiatives.   | Strong ability to motivate individuals and groups to actively participate in sustainability initiatives. Contributions foster widespread environmental responsibility and action.                               | Outstanding ability to inspire and mobilize widespread participation in sustainability initiatives. Efforts create a transformative impact, fostering a culture of environmental action.   |



## Passion and Achievements - Rating Scale (2-2)

| Assessment Elements                               | 25% - 0%   | 50% - 26%   | 75% - 51%  | 100% - 76%   |
|---|--|---|--|--|
| Specialized Learning and Education                | Limited or no evidence of participation in specialized learning or education programs. Contributions lack focus on expanding knowledge or expertise in environmental sciences. | Moderate participation in academic or professional programs, showcasing basic efforts to enhance knowledge and expertise in environmental sciences.         | Strong participation in specialized learning and educational programs, including national or international events. Contributions reflect a commitment to advancing knowledge and professional development in sustainability. | Exemplary participation in academic and professional learning opportunities. Contributions demonstrate leadership in advancing environmental knowledge and expertise through high-impact events and training programs. |
| Voluntary Contributions to Professional Societies | Minimal or no involvement in environmental professional societies. Contributions to events, initiatives, or collaborations are negligible or absent.                           | Moderate involvement in professional societies, demonstrating moderate contributions to events, initiatives, or collaborations. Impact is limited in scope. | Strong involvement in professional societies, showcasing significant contributions to events, initiatives, and collaborations that advance sustainability objectives.  | Outstanding voluntary contributions to professional societies, highlighting leadership and impactful collaborations that foster sustainability and advance environmental goals.  |

## Creativity and Innovation - Rating Scale

| Assessment Elements              | 0% - 25%  | 26% - 50%   | 51% - 75%  | 76% - 100%   |
|----------------------------------|---|---|--|--|
| Creativity And Proactivity       | Rare provision of creative and unusual ideas and solutions. Fail to address current or future environmental challenges. | Moderate level of creativity is evident. Efforts incorporate incremental enhancements to traditional methods but lack a clear differentiation from existing practices. Addresses current national environmental challenges. | Evidence of strong creativity and originality. Efforts incorporate essential enhancements to traditional methods that lead to some differentiation from existing practices. Addresses current and future national environmental challenges | Evidence of exceptional creativity and originality. Efforts incorporate breakthrough enhancements to traditional methods that lead to transformative differentiation from existing practices. Addresses current and future national and international environmental challenges |
| Ideas And Initiatives Generation | No utilization of evidence-based innovation methodologies. Minimal deployment of data analysis and benchmarking.        | Utilization of evidence-based innovation methodologies incorporating the use of data analysis and benchmarking in generating a moderate number of ideas.  | Utilization of evidence-based innovation methodologies incorporating the use of data analysis and benchmarking in generating most of the ideas.  | Utilization of evidence-based innovation methodologies incorporating the use of data analysis and benchmarking in generating all of the ideas.   |
| Implementation                   | None of the ideas were implemented.   | Some of the ideas were implemented. moderate efforts in planning. Utilization of some available resources and technologies.   | Most of the ideas were implemented. Clear planning efforts. Utilization of available resources and technologies. Some efforts to finance the implementation through community participation.   | All ideas were implemented. Strong planning efforts. Utilization of available resources and technologies. Implementation was financed completely by community participation and stakeholders.  |
| Documentation                    | Limited attempts of formal or legal documentation. If so, innovations were not published in peer-reviewed journals.     | Some researches were published in national and/or regional peer-reviewed journals. The participant owns few intellectual properties.  | Most of the innovative efforts were published in international peer-reviewed journals. The participant owns some intellectual properties and patents   | Most of the innovative efforts were published in international peer-reviewed journals. The participant owns many intellectual properties and patents most of which can be deployed on various levels nationally and internationally  |

## Influence, Results and Impact - Rating Scale

| Assessment Elements                              | 25% - 0%   | 50% - 26%   | 75% - 51%   | 100% - 76%   |
|--|--|---|---|--|
| Societal Influence                               | Minimal attention to the participant's efforts with little effect on audiences engagement. The efforts did not inspire individual or group participation.                  | The participant's efforts gained moderate attention. Efforts led to engaging moderate group of individuals and stakeholders. Participation were evident on limited scale. | The participant's efforts led to effective engagement of diverse stakeholders and audiences. Innovations inspired change within communities and organizations                               | Widespread and sustained engagement resulted from the participant's efforts. efforts inspire collective action, fostering a cultural shift toward environmental responsibility while reaching diverse and expansive audiences. |
| Environmental Impact                             | Limited measurement of the outcomes. No measurement of the environmental impact. Irrelevant to environment and sustainability.   | Moderate outcomes were evident through relevant measures. Slight impact on environmental and sustainability indicators.   | Significant measureable outcomes leading to noticeable environmental impact were evident. The participant demonstrated some proof that the impact is sustainable and/or re-scalable.        | Exceptional outcomes were evident leading to transformative environmental impact. The participant demonstrated robust proof that the impact is sustainable and re-scalable   |
| Contribution To Strategies                       | No evident effect on the achievement of broader national or international strategies.<br><br>such as UAE environmental Directions or the UN Sustainable Development Goals. | The participant's efforts pushed toward achieving moderate national and international priorities. No measurement on how impactful the efforts were.                       | The participant's efforts contributed in achieving some national and international priorities with clear measurement of the relative contribution.  | The participant provided evidence on being the main contributor to achieving some national and international priorities with clear evidence of the relative contribution.  |
| Individual Achievements (Awards And Recognition) | No individual achievements related to environmental efforts.   | Multiple individual achievements related to environmental efforts on the national level.  | Many individual achievements related to environmental efforts on the national and international levels.   | Many individual achievements related to environmental efforts on the national and international levels in various environmental care aspects.  |
| Recognitions And Adoption By Others              | Limited or no evidence of external recognition or adoption of efforts. Initiatives lack validation or influence beyond the applicant's immediate scope.                    | Moderate recognition or adoption but limited in scope or impact. Efforts show moderate engagement with external stakeholders or communities.                              | Strong evidence of recognition or adoption, with initiatives gaining significant endorsements, awards, or replication by organizations or communities. Efforts demonstrate broad influence. | Exceptional recognition and widespread adoption, with initiatives serving as a model for others. Contributions are celebrated through awards, endorsements, and replication on a regional or global scale.                     |



## Subcategory 2:

### Environmental Creativity Pioneer Medal Criteria

- Environmental Passion and Commitment to Sustainability
- Creativity and Innovation
- Influence, Results and Impact

#### Criterion 1:

Environmental Passion and  
Commitment to Sustainability

20%

This criterion evaluates how passionate the participant is about addressing environmental challenges including societal awareness, green practices and environmental impact. This criterion focuses on efforts, achievements and recognition.

- ➔ Provide examples that showcase a deep commitment to environmental causes, including active involvement in initiatives, raising awareness, or advocacy efforts.
- ➔ Highlight how the candidate's actions align with national and international environmental strategies, such as UAE Environmental Directions or the UN Sustainable Development Goals (SDGs).
- ➔ Describe how the candidate has motivated individuals or groups to actively participate in sustainability initiatives, creating a broader influence that encourages widespread environmental action.
- ➔ Highlight participation in specialized learning and educational programs, including academic or professional training and involvement in national or international events related to environmental sciences, demonstrating a commitment to expanding knowledge and expertise.
- ➔ Showcase active involvement in environmental professional societies, emphasizing voluntary contributions to events, initiatives, or collaborations that further sustainability objectives and foster professional engagement.

**Criterion 2:****Environmental Passion and  
Commitment to Sustainability**

# 40%

This criterion evaluates the originality and inventiveness of solutions or approaches employed to address environmental challenges. It focuses on the targeted level of innovation as well as ideation, implementation and documentation.

- ➔ Demonstrate how your projects, campaigns, practices, or initiatives address environmental challenges through creative and innovative approaches.
- ➔ Provide evidence of originality and uniqueness in your work, showcasing how it introduces fresh perspectives or methods in addressing sustainability issues. Examples of originality could include securing intellectual property rights (e.g., patents or trademarks) or any other way that highlights innovative contributions.
- ➔ Illustrate your ability to engage diverse audiences using creative mediums such as art, media, technology, or other innovative platforms to convey sustainability messages.
- ➔ Provide examples of the application of emerging technologies, such as artificial intelligence, blockchain, or IoT (Internet of Things), to create impactful and innovative solutions for environmental challenges.

**Criterion 3:****Influence, Results and Impact**

# 40%

This criterion explores qualitative and quantitative results, with focus on magnitude of the societal and environmental impact and how the participant's efforts contributed to the broader environmental strategies. Sustainability of positive effects is, also, considered.

- ➔ Demonstrate how creative projects or initiatives and approaches have influenced society, raising awareness, mobilizing efforts, and fostering positive cultural change toward sustainability.
- ➔ Showcase immediate outcomes of innovative efforts, emphasizing measurable impacts on environmental sustainability and tangible progress in addressing specific challenges.
- ➔ Highlight how innovative contributions have directly supported the achievement of national and international environmental and sustainability objectives.
- ➔ Provide evidence of achieving individual accomplishments, including international recognitions, certificates of acknowledgment, and distinguished honors for the candidate exceptional efforts in environmental initiatives.
- ➔ Illustrate how creative projects or initiatives have driven national and international adoption, expansion, and broader generalization, contributing to widespread impact.

# Assessment Tool

## Passion and Achievements - Rating Scale (1-2)

| Assessment Elements                                  | 0% - 25%  | 26% - 50%   | 51% - 75%   | 76% - 100%   |
|--|---|---|---|--|
| Commitment to Environmental Causes                   | Minimal evidence of commitment to environmental causes. Participant shows limited or no active involvement in initiatives, advocacy, or awareness efforts.    | Moderate commitment demonstrated through sporadic involvement in environmental initiatives or advocacy efforts. Contributions lack significant influence or reach.                    | Strong commitment evidenced by consistent and impactful involvement in initiatives, raising awareness, and advocacy efforts. Contributions show measurable influence in promoting sustainability. | Exemplary commitment with substantial and transformative involvement in environmental causes. Contributions inspire widespread awareness and advocacy, demonstrating exceptional leadership in sustainability. |
| Alignment with National and International Strategies | Limited or no alignment with national or international environmental strategies. Actions lack strategic focus or relevance to broader sustainability goals.   | Moderate alignment with key environmental strategies, such as the UAE Environmental Directions or SDGs. Contributions show potential but lack strategic depth or measurable outcomes. | Clear alignment with national and international strategies, showcasing impactful actions that contribute meaningfully to achieving broader sustainability goals.                                  | Exceptional alignment with global and national environmental strategies. Contributions significantly advance key goals, setting benchmarks for achieving SDG-related objectives.                               |
| Motivating Broader Participation                     | Limited or no evidence of motivating others to participate in sustainability initiatives. Influence is restricted to personal efforts without broader impact. | Moderate ability to motivate others, inspiring some individuals or groups to participate in sustainability initiatives. Influence is localized or limited in scope.                   | Strong evidence of motivating individuals and groups to actively participate in sustainability initiatives. Contributions foster a culture of environmental responsibility and action.            | Outstanding ability to inspire and mobilize widespread participation in sustainability initiatives. Contributions create a ripple effect, driving broad-based environmental action and engagement.             |

## Passion and Achievements - Rating Scale (2-2)

| Assessment Elements  | 0% - 25%   | 26% - 50%   | 51% - 75%   | 76% - 100%   |
|--|--|---|---|--|
| Participation in Specialized Learning and Educational Programs | Limited or no participation in specialized learning or educational programs related to environmental sciences. Efforts lack focus on expanding knowledge or expertise. | Moderate participation in relevant programs, showcasing a basic commitment to professional development and environmental education.                         | Strong involvement in specialized programs, demonstrating a commitment to enhancing knowledge and expertise in environmental sciences. Contributions include participation in national or international events. | Exemplary participation in specialized learning and educational programs, showcasing leadership in advancing knowledge and professional development. Contributions highlight active engagement in high-impact events or training programs. |
| Involvement in Environmental Professional Societies            | Minimal or no involvement in environmental professional societies. Contributions to events or initiatives are negligible or absent.                                    | Moderate involvement in professional societies, demonstrating moderate contributions to events, initiatives, or collaborations. Impact is limited in scope. | Strong involvement in environmental professional societies, showcasing significant contributions to events, initiatives, and collaborations that advance sustainability objectives.                             | Outstanding involvement in professional societies, highlighting voluntary contributions that demonstrate leadership and foster sustainability through impactful collaborations and initiatives.  |



## Creativity and Innovation - Rating Scale

| Assessment Elements  | 0% - 25%  | 26% - 50%  | 51% - 75%   | 76% - 100%   |
|--|---|--|---|--|
| Creative and Innovative Approaches to Environmental Challenges | Minimal creativity or innovation demonstrated. Approaches lack originality and fail to introduce new solutions to environmental challenges. | Moderate creativity is evident, showcasing moderate innovation in addressing sustainability issues. Efforts are limited in scope and impact, with potential for further development. | Significant creativity and innovation demonstrated, introducing effective and original solutions to environmental challenges. Efforts have measurable impact and contribute meaningfully to sustainability. | Exemplary creativity and innovation, delivering groundbreaking and transformative approaches that redefine how environmental challenges are addressed. Contributions set new standards for ingenuity and sustainability.   |
| Originality and Intellectual Property                          | Limited originality evident in work. Contributions do not introduce fresh perspectives or secure intellectual property rights.              | Moderate originality demonstrated, showcasing novel approaches or methods. Intellectual property or unique contributions are limited in significance.                                | Strong evidence of originality, featuring unique methods or secured intellectual property rights (e.g., patents or trademarks) that validate innovative contributions to sustainability.                    | Exceptional originality and uniqueness, introducing groundbreaking perspectives or methods that lead to high-profile intellectual property recognition and global acknowledgment of innovation.                            |
| Engagement Through Creative Mediums                            | Minimal use of creative mediums to engage audiences. Efforts lack originality and fail to resonate with diverse stakeholders.               | Efforts involve moderate use of creative platforms, such as media or technology, to convey sustainability messages, but engagement is limited in reach and impact.                   | Strong use of creative mediums to engage diverse audiences effectively. Efforts showcase innovative platforms like art, media, or technology to convey impactful sustainability messages.                   | Outstanding engagement through creative mediums, leveraging cutting-edge platforms that captivate and mobilize diverse audiences. Contributions set benchmarks for using innovation to promote sustainability.             |
| Application of Emerging Technologies                           | Limited or no use of emerging technologies. Efforts lack innovative technological applications to address environmental challenges.         | Moderate use of emerging technologies, such as AI, blockchain, or IoT, to create environmental solutions. Impact and integration are limited in scope.                               | Strong application of emerging technologies, delivering impactful and innovative solutions to sustainability challenges. Efforts demonstrate effective integration of advanced tools and techniques.        | Exemplary use of emerging technologies, showcasing transformative and scalable solutions that redefine how environmental challenges are addressed. Contributions highlight cutting-edge integration and measurable impact. |

## Influence, Results and Impact - Rating Scale (1-2)

| Assessment Elements                     | 0% - 25%  | 26% - 50%  | 51% - 75%  | 76% - 100%   |
|---|---|--|--|--|
| Societal Influence and Cultural Change  | Limited evidence of societal influence or cultural change. Projects or initiatives lack the ability to raise awareness or mobilize significant efforts toward sustainability. | Efforts have moderately influenced society by raising awareness and mobilizing some individuals or groups. However, the impact is localized and does not demonstrate widespread cultural change. | Initiatives have significantly influenced society, effectively raising awareness, mobilizing diverse stakeholders, and fostering noticeable cultural shifts toward sustainability. | Exceptional influence, demonstrating transformative societal impact. Projects mobilize large-scale efforts, fostering widespread cultural change and setting benchmarks for sustainable practices. |
| Measurable Environmental Outcomes       | Minimal or no measurable environmental outcomes achieved. Efforts lack tangible progress in addressing specific environmental challenges.                                     | Outcomes are measurable but limited in scope. Progress is evident in specific areas but lacks comprehensive or scalable environmental impact.  | Strong measurable outcomes, showcasing significant progress in addressing environmental challenges. Efforts demonstrate clear and impactful contributions to sustainability.       | Exemplary measurable outcomes, delivering transformative environmental impact. Contributions set new standards for addressing critical challenges and achieving sustainability goals.              |
| Alignment with Environmental Objectives | Limited or no alignment with national and international environmental strategies. Contributions lack relevance to broader sustainability objectives.                          | Efforts show moderate alignment with environmental strategies, but contributions are not fully integrated into national or international objectives.   | Initiatives are well-aligned with environmental objectives, directly supporting national and international sustainability goals through innovative contributions.                  | Outstanding alignment, showcasing direct and impactful contributions to environmental and sustainability objectives at national and international levels.  |

## Influence, Results and Impact - Rating Scale (1-2)

| Assessment Elements                     | 0% - 25%  | 26% - 50%   | 51% - 75%   | 76% - 100%  |
|---|---|---|---|---|
| Recognitions and Honors                 | Limited or no evidence of individual accomplishments or recognition for environmental efforts. Contributions lack acknowledgment or distinguished honors. | Moderate recognition achieved, including certificates or local acknowledgment. Efforts demonstrate potential but lack widespread or significant honors. | Strong recognition, including international certifications, distinguished honors, or multiple acknowledgments for exceptional environmental contributions.                  | Exceptional accomplishments, featuring high-profile international recognitions and distinguished honors that validate extraordinary efforts in environmental initiatives. |
| Adoption, Expansion, and Generalization | Limited or no evidence of initiatives being adopted or expanded. Contributions lack broader applicability or scalability.                                 | Efforts show potential for adoption or expansion, with moderate evidence of replication or generalization in specific contexts.                         | Strong evidence of adoption, expansion, and generalization across national or international contexts. Contributions demonstrate significant scalability and broader impact. | Outstanding scalability and impact, with initiatives driving widespread adoption, influencing policies, and creating systemic change across multiple regions or sectors.  |

## Subcategory 3:

### Environmental Youth Advocate Medal Criteria

- Environmental Passion and Commitment to Sustainability
- Creativity and Innovation
- Influence, Results and Impact

#### Criterion 1:

Environmental Passion and  
Commitment to Sustainability

# 30%

This criterion evaluates how passionate the participant is about addressing environmental challenges including societal awareness, green practices and environmental impact. This criterion focuses on efforts, achievements and recognitions.

- Provide examples that showcase a deep commitment to environmental causes, including active involvement in initiatives, raising awareness, or advocacy efforts.
- Highlight how the candidate's actions align with national and international environmental strategies, such as UAE Environmental Directions or the UN Sustainable Development Goals (SDGs).
- Illustrate how the participant's actions have inspired broader community participation in sustainability initiatives while actively engaging in environmental professional societies.
- Showcase voluntary contributions to events and initiatives that advance environmental objectives and foster community involvement.
- Showcase examples of leadership roles, such as mobilizing teams, organizing events, or mentoring peers, that contributed to advancing environmental activities.





## Criterion 2: Learning and Creativity

---

# 30%

This criterion evaluates the originality and inventiveness of solutions or approaches employed to address environmental challenges. It focuses on the targeted level of innovation as well as ideation, implementation and documentation.

- ➔ Highlight specialized learning and educational experiences gained through academic or professional programs, or participation in national and international events focused on environmental sciences.
- ➔ Illustrate how the participant remains informed about national and international best practices in environmental sustainability, showcasing continuous learning and adaptation.
- ➔ Demonstrate innovative approaches and solutions developed to tackle current and future environmental challenges, emphasizing creativity and out-of-the-box thinking.
- ➔ Showcase the practical implementation of ideas, highlighting resource management and effective utilization in executing environmental initiatives.

## Criterion 3: Influence, Results and Impact

---

# 40%

This criterion explores qualitative and quantitative results, with focus on magnitude of the societal and environmental impact and how the participant's efforts contributed to the broader environmental strategies. Sustainability of positive effects is, also, considered.

- ➔ Demonstrate societal influence in raising awareness, mobilizing efforts, and fostering positive cultural change toward environmental sustainability.
- ➔ Provide evidence of immediate outcomes resulting from the participant's efforts, highlighting their measurable impact on environmental and sustainability objectives.
- ➔ Illustrate the extent to which the participant's initiatives have contributed to achieving national and international environmental and sustainability goals.
- ➔ Provide evidence of achieving individual accomplishments, including international recognitions, certificates of acknowledgment, and distinguished honors for the candidate exceptional efforts in environmental initiatives.

# Assessment Tool

## Passion and Achievements - Rating Scale (1-2)

| Assessment Elements  | 0% - 25%   | 26% - 50%   | 51% - 75%  | 76% - 100%  |
|--|--|---|--|---|
| Commitment to Environmental Causes                                 | Minimal or no evidence of active involvement in environmental causes. Efforts lack consistency, visibility, or measurable impact.  | Moderate involvement in environmental causes is evident, including participation in initiatives or advocacy efforts, but contributions remain localized or lack significant impact. | Strong commitment to environmental causes, demonstrated through active participation in impactful initiatives, raising awareness, and consistent advocacy efforts that contribute to environmental objectives. | Exceptional commitment to environmental causes, with sustained and transformative contributions through advocacy, awareness campaigns, and impactful initiatives that set benchmarks for environmental stewardship.                                       |
| Alignment with National and International Environmental Strategies | Limited or no evidence of alignment with national or international environmental strategies. Efforts lack focus on broader frameworks such as UAE Environmental Directions or the UN SDGs. | Moderate alignment with national or international strategies is evident, but contributions lack depth or significant integration into these frameworks.                             | Strong alignment with national and international environmental strategies, showcasing contributions that effectively support UAE Environmental Directions, UN SDGs, or similar frameworks.                     | Exemplary alignment with national and international environmental strategies, with actions actively advancing UAE Environmental Directions, UN SDGs, or other global frameworks, demonstrating leadership on a national and global scale.                 |
| Inspiring Broader Community Participation                          | Minimal or no evidence of inspiring community participation in sustainability initiatives. Efforts lack visibility or broader influence.   | Moderate efforts to inspire community participation are evident, but influence remains limited in scope or reach. Contributions demonstrate potential but lack widespread impact.   | Strong evidence of inspiring community participation, actively engaging individuals in sustainability initiatives, and fostering collaboration through environmental professional societies.                   | Exceptional ability to inspire community participation, demonstrated through impactful initiatives that foster widespread engagement, active collaboration with professional societies, and transformative influence on community sustainability efforts. |

## Influence, Results and Impact - Rating Scale (2-2)

| Assessment Elements                               | 0% - 25%   | 26% - 50%   | 51% - 75%   | 76% - 100%   |
|---|--|---|---|--|
| Voluntary Contributions to Events and Initiatives | Limited or no evidence of voluntary contributions to environmental events or initiatives. Participation is sporadic and lacks measurable outcomes. | Moderate voluntary contributions are evident, but efforts are localized or lack significant impact on advancing environmental objectives. | Strong voluntary contributions to environmental events and initiatives, fostering community involvement and achieving meaningful progress toward environmental objectives.    | Exemplary voluntary contributions, with sustained and impactful involvement in events and initiatives that advance environmental objectives and foster widespread community engagement.  |
| Leadership in Environmental Activities            | Limited or no evidence of leadership in environmental activities. Contributions lack strategic direction, impact, or influence.                    | Moderate evidence of leadership roles, such as organizing events or mentoring peers, but efforts lack significant scope or impact.        | Strong leadership demonstrated through mobilizing teams, organizing impactful events, and mentoring peers, resulting in meaningful contributions to environmental activities. | Exemplary leadership in environmental activities, mobilizing teams, organizing transformative events, and mentoring peers, driving significant progress in advancing environmental objectives and fostering a culture of sustainability. |



## Learning and Creativity - Rating Scale (1-2)

| Assessment Elements                   | 25% - 0%  | 50% - 26%   | 75% - 51%  | 100% - 76%   |
|---------------------------------------|---|---|--|--|
| Learning                              | No evidence of obtaining knowledge or skills that may help produce meaningful environmental and sustainable change      | Moderate efforts to obtain relevant knowledge and skills through courses and workshops  | Clear interest in obtaining relevant knowledge and skills through courses and workshops. Evidence of professional certifications and/or academic degrees.  | Evidence of Post-graduate degree(s) and advanced professional certifications. Some researches address environmental care and sustainability  |
| Alignment With Current Best Practices | Minimal efforts to align and get the knowledge of the current national or international best practices                  | Moderate efforts to align and get the knowledge of the current national and international best practices.   | Serious efforts to align and get the knowledge of the current national and international best practices. Evidence is available on random deployment of the acquired knowledge  | Exceptional efforts to align and get the knowledge of the current national and international best practices. Evidence is available on impactful deployment.  |
| Creativity And Proactivity            | Rare provision of creative and unusual ideas and solutions. Fail to address current or future environmental challenges. | Moderate creativity is evident, with efforts focused on incremental enhancements to traditional methods and some differentiation from existing practices. The approach addresses current national environmental challenges. | Evidence of strong creativity and originality. Efforts incorporate essential enhancements to traditional methods that lead to some differentiation from existing practices. Addresses current and future national environmental challenges | Evidence of exceptional creativity and originality. Efforts incorporate breakthrough enhancements to traditional methods that lead to transformative differentiation from existing practices. Addresses current and future national and international environmental challenges |
| Implementation                        | None of the ideas were implemented.   | Some of the ideas were implemented. Moderate efforts in planning. Utilization of some available resources and technologies.   | Most of the ideas were implemented. Clear planning efforts. Utilization of available resources and technologies. Some efforts to finance the implementation through community participation.   | All ideas were implemented. Strong planning efforts. Utilization of available resources and technologies. Implementation was financed completely by community participation and stakeholders.  |

## Influence, Results and Impact - Rating Scale (1-2)

| Assessment Elements        | 0% - 25%   | 26% - 50%   | 51% - 75%  | 76% - 100%   |
|----------------------------|--|---|--|--|
| Societal Influence         | Minimal attention to the participant's efforts with little effect on audience engagement. The efforts did not inspire individual or group participation.                   | The participant's efforts gained moderate attention. Efforts led to engaging moderate group of individuals and stakeholders. Participation were evident on limited scale. | The participant's efforts led to effective engagement of diverse stakeholders and audiences. Innovations inspired change within communities and organizations                        | Widespread and sustained engagement resulted from the participant's efforts. efforts inspire collective action, fostering a cultural shift toward environmental responsibility while reaching diverse and expansive audiences. |
| Environmental Impact       | Limited measurement of the outcomes. No measurement of the environmental impact. Irrelevant to environment and sustainability.   | Moderate outcomes were evident through relevant measures. moderate impact on environmental and sustainability indicators.   | Significant measureable outcomes leading to noticeable environmental impact were evident. The participant demonstrated some proof that the impact is sustainable and/or re-scalable. | Exceptional outcomes were evident leading to transformative environmental impact. The participant demonstrated robust proof that the impact is sustainable and re-scalable   |
| Contribution To Strategies | No evident effect on the achievement of broader national or international strategies.<br><br>such as UAE environmental Directions or the UN Sustainable Development Goals. | The participant's efforts pushed toward achieving some national and international priorities. some measurement on how impactful the efforts were.                         | The participant's efforts contributed in achieving some national and international priorities with clear measurement of the relative contribution.                                   | The participant provided evidence on being the main contributor to achieving some national and international priorities with clear evidence of the relative contribution.  |

### Influence, Results and Impact - Rating Scale (2-2)

| Assessment Elements                              | 0% - 25%   | 26% - 50%   | 51% - 75%   | 76% - 100%  |
|--|--|---|---|---|
| Leadership And Mentorship                        | Little to no evidence of leadership or mentorship. Minimal involvement in organizing or inspiring others, with negligible contributions to fostering a collective sustainability effort. | Moderate evidence of leadership and mentorship. Contributions demonstrate some capacity to organize teams, mentor peers, or lead events, but with limited reach or influence. | Strong evidence of active leadership and mentorship, with significant contributions to organizing impactful events, mobilizing teams, and inspiring peers. Efforts reflect meaningful influence within the community. | Exemplary leadership and mentorship. Demonstrates exceptional ability to lead and inspire, mobilizing large-scale efforts, fostering networks of sustainability advocates, and driving cultural change through mentorship and visionary leadership. |
| Individual Achievements (Awards And Recognition) | No individual achievements related to environmental efforts.   | Multiple individual achievements related to environmental efforts on the national level.  | Many individual achievements related to environmental efforts on the national and international levels.   | Many individual achievements related to environmental efforts on the national and international levels in various environmental care aspects.   |



## Subcategory 4:

### Optimal Natural Resource User Medal Criteria

- Compliance and Community Awareness
- Sustainable Practices and Conservation Efforts
- Results and Impact

#### Criterion 1:

Compliance and Community Awareness

40%

Assesses compliance with laws and active efforts to raise community awareness about sustainable practices. Highlights participation in conservation groups and fostering collective environmental responsibility.

- ➔ Provide evidence of compliance with laws, policies, and procedures established by relevant authorities, such as adhering to hunting bans, obtaining necessary permits, timely renewal of licenses, or any other form.
- ➔ Demonstrate active participation in raising community awareness on sustainable practices, such as educating farmers, fishers, or hunters about responsible resource use and conservation.
- ➔ Highlight contributions to promoting sustainable environment issues through knowledge-sharing efforts, such as community small events.

**Criterion 2:****Sustainable Practices and  
Conservation Efforts**

# 40%

Focuses on adopting sustainable practices to protect ecosystems, restore habitats, and address environmental challenges. Emphasizes creativity and innovative solutions in conservation efforts.

- ➔ Provide evidence of adopting and implementing sustainable practices, such as using efficient irrigation systems, reducing pesticide usage, preserving coral reefs, practicing environmentally friendly fishing or farming techniques or other forms.
- ➔ Demonstrate contributions toward climate change mitigation, pollution reduction through personal and community-based actions.
- ➔ Highlight efforts to protect endangered species, including implementing measures to safeguard their habitats and reduce environmental harm caused by farming, fishing, or hunting activities.
- ➔ Illustrate how conservation practices have been effectively replicated (scalability) within the community or expanded beyond local contexts, amplifying their environmental impact.





### Criterion 3: Results and Impact

---

# 20%

Evaluates tangible outcomes in resource efficiency, conservation efforts, and habitat restoration. Consider recognition, scalability, and broader impact of sustainable actions.

- Provide evidence of improvements in natural resource management, such as reduced water consumption, increased efficiency in irrigation, or decreased pesticide use.
- Demonstrate outcomes of conservation efforts, such as protecting endangered species, restoring habitats, or increasing fish populations.
- Highlight achievements, such as recognition through environmental awards, certifications, or notable participation in conservation-related competitions.



# Assessment Tool

## Compliance and Community Awareness - Rating Scale

| Assessment Elements                                       | 0% - 25%  | 26% - 50%  | 51% - 75%   | 76% - 100%  |
|---|---|--|---|---|
| Compliance with Laws and Policies                         | Limited or no evidence of compliance with relevant laws, policies, or procedures. Minimal effort in adhering to regulations such as hunting bans, license renewals, or permits. | Demonstrates moderate compliance with some laws and policies. Efforts are evident but lack consistency or comprehensive adherence to all regulations.    | Displays consistent compliance with most relevant laws and policies. Actions include obtaining necessary permits, adhering to bans, and ensuring timely license renewals.                     | Exemplary compliance with all laws, policies, and procedures. Efforts exceed expectations, showcasing proactive measures to uphold and advocate for legal adherence.  |
| Raising Community Awareness                               | Minimal or no efforts to raise awareness about sustainable practices. Limited engagement with farmers, fishers, or other stakeholders in conservation education.                | Moderate efforts to educate and engage community members on sustainable practices. Impact is limited to a small audience or lacks a structured approach. | Demonstrates significant efforts to raise community awareness, with evidence of educational programs or knowledge-sharing initiatives that influence sustainable practices.                   | Outstanding efforts in educating and mobilizing the community on sustainable practices. Initiatives are impactful, widespread, and foster a culture of collective environmental responsibility.                     |
| Promoting Sustainable Practices Through Knowledge Sharing | Minimal or no evidence of promoting sustainable environment issues. Limited knowledge-sharing efforts or engagement in community events.  | Moderate knowledge-sharing efforts, such as participating in small community events or peer mentoring. Impact is localized and not far-reaching.         | Regular and impactful contributions to promoting sustainable practices through well-structured knowledge-sharing activities. Efforts are effective and positively influence target audiences. | Exemplary knowledge-sharing initiatives that are innovative, consistent, and widely recognized for promoting sustainable practices. Contributions demonstrate leadership in fostering environmental responsibility. |

## Sustainable Practices and Conservation Efforts - Rating Scale

| Assessment Elements                                   | 0% - 25%  | 26% - 50%   | 51% - 75%  | 76% - 100%   |
|---|---|---|--|--|
| Adoption of Sustainable Practices                     | Limited or no evidence of adopting sustainable practices. Efforts lack a structured approach and have minimal or no measurable impact on ecosystems or resource conservation. | Demonstrates moderate adoption of sustainable practices, such as using basic conservation methods or reducing pesticide usage. Impact is localized and lacks scalability. | Significant adoption and implementation of sustainable practices, such as efficient irrigation systems, environmentally friendly farming, or coral reef preservation. Efforts show measurable environmental benefits and consistent application. | Exemplary adoption of innovative and impactful sustainable practices that protect ecosystems, restore habitats, and demonstrate leadership in resource conservation. Efforts are highly recognized and influence broader adoption. |
| Ecosystem Regeneration                                | Minimal or no contributions toward climate change mitigation or pollution reduction. Efforts are fragmented and lack tangible outcomes.                                       | Moderate contributions toward climate change mitigation or pollution reduction. Actions show promise but lack significant or measurable impact.                           | Demonstrates effective contributions to climate change mitigation or pollution reduction. Efforts are impactful, address key environmental challenges, and produce measurable outcomes.  | Exceptional efforts in climate change mitigation or pollution reduction through innovative methods. Contributions drive long-term environmental recovery and inspire community and regional adoption.                              |
| Protection of Endangered Species                      | Limited or no actions taken to protect endangered species or safeguard their habitats. Efforts lack focus and measurable outcomes.  | Moderate measures implemented to protect endangered species, such as reducing harm caused by farming or fishing. Impact is limited to specific cases or areas.            | Significant measures to protect endangered species, including safeguarding habitats and reducing environmental harm. Efforts show measurable improvements in species preservation.   | Outstanding and innovative measures to protect endangered species and their habitats. Actions demonstrate long-term commitment, leadership, and substantial positive impact on biodiversity.                                       |
| Replication and Scalability of Conservation Practices | Minimal or no evidence of replicating or scaling conservation practices. Efforts are isolated and lack broader applicability.   | Moderate efforts to replicate conservation practices within the local community. Scalability potential is evident but not fully realized.                                 | Demonstrates effective replication of conservation practices across local and regional contexts. Efforts are impactful and scalable, contributing to broader environmental benefits.   | Exemplary replication and scalability of conservation efforts, inspiring widespread adoption and significant environmental impact. Contributions are recognized for setting new benchmarks in conservation practices.              |

## Results and Impact - Rating Scale

| Assessment Elements                         | 0% - 25%   | 26% - 50%  | 51% - 75%  | 76% - 100%   |
|---|--|--|--|--|
| Improvements in Natural Resource Management | Minimal or no measurable improvements in resource management. Efforts are poorly documented or lack clear outcomes in water consumption, irrigation efficiency, or pesticide use | Demonstrates moderate measurable improvements in resource efficiency, such as minor reductions in water usage or pesticide application. Results are localized and lack broader applicability | Significant and well-documented improvements in natural resource management, including reduced water consumption, efficient irrigation practices, and decreased pesticide use. Efforts show consistent and impactful results | Exemplary improvements in resource management, achieving substantial and scalable outcomes. Actions demonstrate leadership in efficient resource use and set benchmarks for environmental sustainability   |
| Tangible Outcomes of Conservation Efforts   | Limited or no evidence of conservation efforts resulting in tangible outcomes. Efforts lack focus or measurable impact on habitats or endangered species                         | Moderate tangible outcomes achieved, such as minor improvements in habitat restoration or species protection. Results are localized and have limited broader impact                          | Significant conservation outcomes, such as restored habitats, increased fish populations, or notable progress in protecting endangered species. Efforts are well-documented and impactful                                    | Exceptional conservation outcomes with transformative impact, including widespread habitat restoration, measurable species recovery, or ecosystem regeneration. Efforts inspire regional or global recognition   |
| Recognition and Broader Impact              | Minimal or no recognition for conservation efforts. Actions lack visibility or broader impact beyond immediate stakeholders  | Moderate recognition through local awards, certifications, or participation in conservation-related activities. Broader impact remains limited   | Significant recognition through regional or national awards, certifications, or competitive achievements. Efforts demonstrate broader influence and inspire community or organizational adoption                             | Outstanding recognition through prestigious environmental awards, international certifications, or notable participation in high-profile conservation competitions. Efforts achieve widespread impact, scalability, and set new standards for environmental excellence |



# Appendix B:

## The Sheikh Hamdan bin Zayed Award for Environmental Research Model and Criteria

### Subcategory 1:

#### Environmental Research Institute Criteria

- Leadership and Environmental Governance
- Research Innovation and Operational Effectiveness
- Institutional Recognition and Capacity Building
- Impact and Sustainable Outcomes

#### Criterion 1:

Leadership and Environmental  
Governance

20%

This criterion examines the institute's leadership in promoting ethical research practices, embedding environmental stewardship principles, and fostering strategic decision-making aligned with national goals and stakeholder needs. It also evaluates governance practices to ensure compliance with regulations and frameworks.

- ➔ Provide evidence of how the institute's leadership promotes and ensures an ethical research culture, embedding principles of environmental stewardship, inclusivity, and transparency into policies, practices, and operations.
- ➔ Demonstrate how the institute's leadership has established and communicated a forward-looking vision for advancing environmental sustainability, aligned with the UAE's national goals and global environmental frameworks.
- ➔ Showcase the institute's strategic decision-making process for selecting research projects that address critical environmental challenges, ensuring alignment with funders' expectations and national priorities.
- ➔ Highlight the institute's engagement with diverse stakeholders, including funders, beneficiaries, research partners, and communities, to understand their needs, expectations, and long-term aspirations for impactful environmental research.
- ➔ Highlight efforts to ensure institutional transparency, including regular public disclosures of environmental performance, compliance with regulations, and adherence to recognized reporting standards.

**Criterion 2:****Research Innovation and  
Operational Effectiveness**

# 30%

This criterion assesses the institute's ability to drive innovation through interdisciplinary collaboration, advanced methodologies, and data-driven approaches. It evaluates operational excellence in resource management and stakeholder coordination, while highlighting efforts to make research outputs accessible to the broader community.

- ➔ Provide evidence of how the institute leverages interdisciplinary collaboration and cross-sector partnerships to enhance the quality and relevance of its research programs.
- ➔ Demonstrate the implementation of innovative research methodologies, advanced technologies, and data-driven approaches, such as AI, GIS, or remote sensing technologies, to deliver groundbreaking environmental solutions.
- ➔ Demonstrate how the institute ensures operational effectiveness through effective resource management, project execution, and stakeholder coordination, addressing challenges and maintaining high ethical standards.
- ➔ Showcase how the institute fosters a culture of continuous improvement, utilizing lessons learned to refine research approaches, methodologies, and stakeholder engagement strategies.

**Criterion 3:****Institutional Recognition  
and Capacity Building**

# 20%

This criterion focuses on the institute's ability to secure national and international recognition, attract top research talent, and build capacity through training, mentorship, and collaboration. It also evaluates the institute's effectiveness in sharing knowledge and incorporating external feedback to enhance its research impact.

- ➔ Provide evidence of the institute's achievements in securing national and international recognition received by the institute for its research contributions to environmental science and sustainability, such as awards, citations, rankings, or memberships in leading environmental research networks.
- ➔ Demonstrate how the institute attracts, develops, and retains exceptional academic and research talent, with a focus on expertise in climate science, biodiversity, and sustainability, fostering innovation and thought leadership while ensuring diversity and inclusion through gender balance and geographic representation in talent acquisition strategies.
- ➔ Demonstrate how the institute builds capacity among its staff, students, and stakeholders through training programs, mentorship, and professional development initiatives.

- ➔ Showcase examples of how the institute supports knowledge transfer through publications, conferences, workshops, and collaborative research projects on key environmental themes, strengthening its reputation as a leading research entity.
- ➔ Illustrate how the institute uses external feedback mechanisms and performance reviews to evaluate and improve its research programs, ensuring alignment with evolving environmental challenges and opportunities.

#### Criterion 4: Impact and Sustainable Outcomes

# 30%

---

This criterion evaluates the tangible and sustainable environmental outcomes achieved by the institute's research contributions. It assesses how effectively the research has addressed UAE's environmental challenges, such as climate change, biodiversity loss, and resource efficiency, while fostering societal and organizational engagement for impactful change.

- ➔ Provide measurable evidence, within the past 3-5 years, of the institute's research contributions and results in addressing UAE's environmental challenges, such as climate change, biodiversity loss, pollution reduction, resource efficiency, or any other environmental challenges. e.g., the number of project outcomes fully implemented and making a difference?
- ➔ Highlight how the institute's research programs have led to transformative outcomes that benefit society, such as influencing policies, driving community action, or promoting sustainable practices across sectors.
- ➔ Highlight the alignment of your contributions with broader strategies such as UAE environmental Directions or the UN Sustainable Development Goals.
- ➔ Demonstrate how the institute fosters societal engagement through public awareness campaigns, educational initiatives, and collaborations with community groups, ensuring inclusivity and widespread impact.
- ➔ Illustrate how the institute's research outcomes have inspired other organizations, academic institutions, or industries to adopt similar practices, fostering a culture of sustainability across the UAE and beyond.



# Assessment Tool

## Leadership and Environmental Governance - Rating Scale (1-2)

| Assessment Elements                                    | 0% - 25%  | 26% - 50%  | 51% - 75%   | 76% - 100%   |
|--|---|--|---|--|
| Ethical Research Culture and Environmental Stewardship | Minimal evidence of promoting ethical research practices. Leadership lacks a clear focus on embedding principles of environmental stewardship, inclusivity, and transparency in operations or policies. | Basic efforts to promote ethical research practices are evident, but they lack integration into institutional policies or practices. Environmental stewardship principles are partially addressed but lack depth or breadth. | Leadership demonstrates strong commitment to ethical research culture, embedding environmental stewardship, inclusivity, and transparency into well-documented policies, practices, and operations. Efforts show measurable impact. | Exemplary leadership ensures a deeply ingrained ethical research culture, with robust policies, practices, and operations that prioritize environmental stewardship, inclusivity, and transparency. Contributions set benchmarks for institutional practices.      |
| Vision for Advancing Environmental Sustainability      | Limited or no evidence of a forward-looking vision for environmental sustainability. Leadership lacks alignment with UAE national goals or global environmental frameworks.                             | Basic vision for advancing environmental sustainability is evident but lacks comprehensive alignment with UAE national goals and global frameworks. Communication and implementation are limited.                            | Leadership has established a clear and forward-looking vision for environmental sustainability, aligned with UAE national goals and global frameworks. The vision is well-communicated and shows positive implementation outcomes.  | Exemplary leadership demonstrates a transformative vision for environmental sustainability, fully aligned with UAE national goals and global frameworks. The vision is widely communicated and has resulted in significant strategic and operational advancements. |
| Strategic Decision-Making for Research Projects        | Minimal evidence of strategic decision-making in selecting research projects. Efforts lack alignment with critical environmental challenges or funders' expectations.                                   | Basic strategic decision-making processes are evident but lack comprehensive alignment with environmental challenges, funders' expectations, or national priorities.   | Leadership demonstrates strong strategic decision-making, ensuring research projects align with critical environmental challenges, funders' expectations, and national priorities. Processes are well-documented and impactful.     | Exemplary strategic decision-making ensures research projects address critical environmental challenges and align fully with funders' expectations and national priorities. Contributions lead to systemic and measurable environmental advancements.              |

## Leadership and Environmental Governance - Rating Scale (2-2)

| Assessment Elements                        | 0% - 25%   | 26% - 50%   | 51% - 75%   | 76% - 100%  |
|--|--|---|---|---|
| Stakeholder Engagement and Needs Alignment | Minimal or no evidence of stakeholder engagement. Leadership lacks mechanisms to understand or address stakeholder needs and aspirations for impactful research. | Basic stakeholder engagement is evident but limited in scope or effectiveness. Efforts address some needs and expectations but lack depth or strategic alignment. | Leadership demonstrates significant engagement with diverse stakeholders, including funders, beneficiaries, research partners, and communities, to understand and address their needs and expectations. Efforts show positive impact. | Exemplary stakeholder engagement demonstrates a collaborative and inclusive approach. Leadership ensures long-term alignment with stakeholder needs, expectations, and aspirations, fostering impactful environmental research. |
| Institutional Transparency and Compliance  | Minimal compliance with regulatory frameworks and poor transparency. Rarely discloses environmental performance or governance practices.                         | Moderate compliance with regulations and frameworks. Efforts at transparency are present but often reactive or incomplete.  | Good compliance with regulatory standards, with regular disclosures and adherence to reporting standards.   | Outstanding compliance and transparency. Sets industry benchmarks by consistently exceeding regulatory requirements and leading in environmental performance disclosures.   |

## Research Innovation and Operational Effectiveness - Rating Scale (1-2)

| Assessment Elements  | 0% - 25%  | 26% - 50%  | 51% - 75%  | 76% - 100%   |
|--|---|--|--|--|
| Leveraging Interdisciplinary Collaboration and Cross-Sector Partnerships | Limited or no evidence of interdisciplinary collaboration or partnerships with other sectors. Research programs lack integration of diverse expertise, reducing their relevance and impact. | Some evidence of interdisciplinary collaboration or cross-sector partnerships, but efforts are isolated or limited in scope. Partnerships demonstrate potential but lack significant influence on research quality or relevance. | Significant evidence of leveraging interdisciplinary collaboration and cross-sector partnerships, enhancing the quality and relevance of research programs. Efforts demonstrate alignment with environmental priorities and stakeholder needs. | Exemplary interdisciplinary collaboration and cross-sector partnerships, resulting in groundbreaking research programs with broad relevance and impact. Contributions set benchmarks for integrated and innovative research practices. |

## Research Innovation and Operational Effectiveness - Rating Scale (2-2)

| Assessment Elements   | 0% - 25%   | 26% - 50%  | 51% - 75%  | 76% - 100%  |
|---|--|--|--|---|
| Innovative Research Methodologies and Technologies                            | Limited or no adoption of innovative methodologies or technologies. Research approaches are outdated or ineffective in addressing current environmental challenges.                                | Moderate use of innovative methodologies and technologies, with some positive outcomes, but inconsistent application and limited leverage of potential benefits.                                     | Consistent implementation of innovative research methodologies and advanced technologies that contribute to significant environmental solutions.   | Leading-edge use of innovative methodologies and technologies like AI, GIS, or remote sensing. The institute pioneers its field, setting benchmarks and delivering transformative environmental insights and solutions.     |
| Operational Effectiveness in Resource Management and Stakeholder Coordination | Limited or no evidence of operational effectiveness. Resource management, project execution, or stakeholder coordination efforts are poorly organized, resulting in inefficiencies and challenges. | Evidence of basic operational practices is present, but resource management and stakeholder coordination lack optimization. Efforts address challenges but fail to achieve consistent effectiveness. | Effective operational practices, showcasing strong resource management, efficient project execution, and coordinated stakeholder engagement. Efforts address challenges proactively and maintain high ethical standards. | Outstanding operational effectiveness, with seamless resource management, highly efficient project execution, and exemplary stakeholder coordination. Contributions ensure ethical and impactful research processes.        |
| Fostering a Culture of Continuous Improvement                                 | Minimal or no evidence of fostering a culture of continuous improvement. Lessons learned are not systematically applied to refine research approaches or stakeholder engagement strategies.        | Some efforts to foster continuous improvement are evident, but practices are inconsistent or lack a clear framework for incorporating lessons learned.   | Strong evidence of fostering a culture of continuous improvement, with systematic refinement of research approaches, methodologies, and stakeholder engagement strategies based on lessons learned.                      | Exemplary commitment to continuous improvement, with comprehensive frameworks for refining research practices and stakeholder strategies. Contributions ensure sustained excellence and adaptability in research processes. |



## Institutional Recognition and Capacity Building - Rating Scale (1-2)

| Assessment Elements                               | 0% - 25%  | 26% - 50%   | 51% - 75%  | 76% - 100%   |
|---|---|---|--|--|
| National and International Recognition            | Minimal or no evidence of achieving national or international recognition. Achievements, if any, are isolated and lack significant impact or credibility within the environmental research community. | The institute has achieved some level of recognition through awards, citations, or rankings but lacks consistent presence or memberships in leading environmental research networks.      | The institute demonstrates significant national and international recognition, earning awards, citations, and rankings that validate its contributions to environmental research. Memberships in leading research networks enhance its visibility and credibility. | Exemplary recognition at both national and international levels. The institute consistently earns prestigious awards, citations, and rankings, establishing itself as a global leader in environmental research. Contributions significantly influence environmental policies and practices.   |
| Talent Attraction, Development, and Retention     | Minimal or ineffective efforts in attracting, developing, or retaining talent. The institute struggles with high turnover rates and lacks a clear strategy for talent development.                    | Moderate efforts in talent management, with some success in attracting and retaining skilled researchers. However, development programs and inclusion strategies are not fully effective. | Strong talent management strategies that successfully attract, develop, and retain high-caliber researchers. The institute offers robust training and mentorship programs and has effective inclusion strategies.  | Outstanding talent management, with the institute recognized as a top employer in environmental research. It excels in attracting, developing, and retaining world-class talent, fostering an environment of innovation and leadership, well-supported by diversity and inclusion initiatives. |
| Capacity Building Through Training and Mentorship | Minimal or no evidence of capacity-building efforts. Training, mentorship, or professional development programs are absent or lack strategic focus.   | Basic capacity-building efforts are evident, but programs lack comprehensive planning or measurable impact. Training and mentorship initiatives are sporadic and limited in scope.        | The institute demonstrates strong capacity-building efforts through well-structured training, mentorship, and professional development initiatives. Programs effectively enhance skills and knowledge among staff, students, and stakeholders.                     | Exemplary capacity-building efforts. The institute implements comprehensive training and mentorship programs that consistently develop expertise and foster professional growth, contributing to long-term institutional excellence.   |

## Institutional Recognition and Capacity Building - Rating Scale (2-2)

| Assessment Elements                         | 0% - 25%  | 26% - 50%   | 51% - 75%   | 76% - 100%  |
|---|---|---|---|---|
| Knowledge Transfer and Collaboration        | Minimal or no evidence of knowledge-sharing or collaboration. Publications, conferences, and workshops are rare or lack impact on the broader research community. | Basic efforts in knowledge transfer are evident, but initiatives lack strategic focus or significant reach. Collaborative research projects are limited in scope and impact.          | The institute demonstrates significant efforts in knowledge transfer, utilizing publications, conferences, workshops, and collaborative research projects to strengthen its reputation and influence. Efforts result in measurable improvements in environmental research impact. | Exemplary knowledge transfer and collaboration. The institute consistently shares groundbreaking research through high-impact channels, fostering partnerships and collaborations that advance environmental sustainability on a global scale.  |
| Feedback Mechanisms and Program Improvement | Minimal or no evidence of using feedback mechanisms to evaluate or improve research programs. External input is rarely sought or utilized.                        | Basic feedback mechanisms are in place but lack strategic implementation or measurable outcomes. Efforts to align research programs with environmental challenges are underdeveloped. | The institute demonstrates strong use of feedback mechanisms and performance reviews to evaluate and improve research programs. Efforts result in tangible enhancements that address evolving environmental challenges.   | Exemplary feedback mechanisms and program improvement processes. The institute consistently uses external input and performance reviews to refine research programs, ensuring alignment with global environmental priorities and opportunities. |

## Impact and Sustainable Outcomes - Rating Scale (1-2)

| Assessment Elements  | 0% - 25%  | 26% - 50%   | 51% - 75%  | 76% - 100%   |
|--|---|---|--|--|
| Measurable Research Contributions to UAE's Env. Challenges             | Limited or no measurable evidence of research contributions addressing UAE's environmental challenges. Outcomes lack tangible impact or alignment with critical issues such as climate change or biodiversity loss. | Research contributions provide some evidence of addressing UAE's environmental challenges, but outcomes are localized or lack transformative impact. Evidence of measurable results is limited or inconsistent. | The institute demonstrates significant measurable research contributions addressing UAE's environmental challenges, such as climate change, biodiversity loss, or pollution reduction. Outcomes are impactful and showcase strategic alignment with national priorities. | Exemplary research contributions addressing UAE's environmental challenges with measurable, transformative outcomes. Results demonstrate long-term impact and alignment with critical environmental issues, setting benchmarks for excellence.         |
| Transformative Outcomes Benefiting Society                             | Minimal or no evidence of research leading to transformative societal outcomes. Contributions lack influence on policies, community actions, or sustainable practices.  | Research contributions demonstrate some societal benefits, such as influencing limited policies or fostering small-scale community actions, but outcomes lack significant or sustained impact.                  | The institute's research has led to transformative outcomes benefiting society, such as driving impactful policies, promoting sustainable practices, or fostering widespread community actions across multiple sectors.  | Exemplary research outcomes with broad societal benefits, driving transformative change through policies, community engagement, and cross-sector sustainable practices. Contributions set new standards for impactful environmental research.          |
| Alignment with Broader Strategies (e.g., UAE Env. Directions, UN SDGs) | Minimal or no alignment with broader environmental strategies such as UAE Environmental Directions or the UN Sustainable Development Goals. Research contributions lack strategic focus or global relevance.        | Basic alignment with broader strategies is evident, but contributions lack depth or a clear connection to national or global environmental priorities.  | Research contributions align significantly with broader strategies, showcasing how outcomes support UAE Environmental Directions, UN SDGs, or similar frameworks. Efforts reflect a clear understanding of strategic goals.  | Exemplary alignment with broader strategies, demonstrating how research outcomes actively advance UAE Environmental Directions, UN SDGs, and global sustainability priorities. Contributions reflect strategic foresight and impactful implementation. |



## Impact and Sustainable Outcomes - Rating Scale (2-2)

| Assessment Elements  | 0% - 25%  | 26% - 50%  | 51% - 75%   | 76% - 100%   |
|--|---|--|---|--|
| Societal Engagement and Public Awareness                       | Limited or no evidence of fostering societal engagement or public awareness. Campaigns, initiatives, or collaborations with community groups are minimal or absent.                   | Some societal engagement efforts are evident, but initiatives lack inclusivity, reach, or significant impact. Public awareness campaigns are limited in scope and influence. | The institute fosters societal engagement through impactful public awareness campaigns, educational initiatives, and collaborations with community groups. Efforts ensure inclusivity and widespread participation. | Exemplary societal engagement, showcasing widespread public awareness, inclusivity, and meaningful collaborations with community groups. Efforts inspire significant societal change and environmental responsibility.   |
| Inspiration and Influence on Other Organizations or Industries | Minimal or no evidence of research outcomes inspiring other organizations, academic institutions, or industries to adopt sustainable practices. Contributions lack broader influence. | Some evidence of research inspiring other entities, but influence is localized or limited to a specific sector. Efforts lack widespread adoption or long-term impact.        | Research outcomes inspire other organizations, academic institutions, or industries to adopt similar sustainable practices. Contributions foster a culture of sustainability across multiple sectors or regions.    | Exemplary influence, demonstrating how research outcomes inspire widespread adoption of sustainable practices across organizations, industries, and academic institutions. Contributions drive systemic change and foster a culture of environmental responsibility. |

## Subcategory 2:

### Environmental Research Projects Criteria

- Methodological Excellence, Innovation, and Creativity
- Practical Relevance and Knowledge Sharing
- Impact and Outcome

#### Criterion 1:

Methodological Excellence,  
Innovation, and Creativity

20%

This criterion focuses on the research's methodological rigor and its integration of innovative and creative approaches. It assesses the alignment of ethical standards, credibility, and precision in design and execution to ensure groundbreaking and reliable results that advance environmental knowledge.

- ➔ Highlight the research's solid foundation, showcasing the use of well-structured and credible methodologies that ensure accuracy, reliability, and scientific validity.
- ➔ Showcase the integration of innovative methodologies or creative approaches that challenge conventional thinking and advance environmental knowledge.
- ➔ Demonstrate how ethical standards were embedded into the research design and execution, ensuring respect for stakeholders, data integrity, and responsible practices.
- ➔ Showcase efforts to engage stakeholders, including local communities, in data collection and validation processes through participatory methods such as focus groups and follow-up studies, fostering inclusivity and diverse perspectives.
- ➔ Provide insights into the key challenges encountered throughout the research lifecycle, such as access to information, compliance with research integrity guidelines, obtaining necessary consents, and addressing governance issues, along with strategies employed to overcome them.

**Criterion 2:**  
Practical Relevance  
and Knowledge Sharing

---

40%

This criterion highlights the research's ability to bridge theory and practice by producing transformative environmental solutions. It evaluates how findings are disseminated through high-impact channels and how the research serves as an educational tool for stakeholders, ensuring long-term relevance and widespread applicability.

- ➔ Provide compelling examples of how the research bridges theory and practice, contributing to transformative environmental improvements and addressing real-world challenges.
- ➔ Demonstrate proactive dissemination of research findings through high-impact channels, such as peer-reviewed publications, international conferences, or educational initiatives, ensuring broad reach and diverse audience.
- ➔ Showcase how the research involved collaboration with different fields or sectors, such as partnerships between academia, industry, or government, to ensure its relevance and usefulness to various stakeholders.
- ➔ Illustrate how the research serves as an educational tool, raising awareness and building capacity among stakeholders to advance sustainability goals and drive long-term change.
- ➔ Provide evidence of implementing metrics to measure the uptake and influence of research by policymakers and stakeholders, demonstrating how findings are effectively integrated into decision-making and policy frameworks.
- ➔ Highlight how lessons learned throughout the project were managed, including adjustments to the research approach, refinements to original research questions, or modifications in stakeholder engagement strategies.



### Criterion 3: Impact and Outcome

# 40%

This criterion evaluates the research's ability to address critical environmental challenges with measurable and transformative outcomes. It emphasizes contributions to biodiversity conservation, pollution reduction, and resource efficiency while assessing the broader societal impact and potential for scaling solutions across diverse contexts.

- Provide robust evidence of how the research directly addresses critical environmental challenges, such as biodiversity conservation, pollution reduction, climate adaptation, resource efficiency, or any other environmental challenges while highlighting measurable and transformative outcomes/results. e.g., publications, citations, awards, and number of reads/downloads
- Demonstrate the research's contribution to shaping policies, influencing industry practices, or driving meaningful community actions, showcasing its broader societal significance.
- Showcase the research's capacity to inspire or accelerate further initiatives, fostering a ripple effect of environmental benefits across sectors or regions.
- Demonstrate how the research delivers actionable solutions to real-world environmental problems with measurable results, including examples such as Social Return on Investment (SROI) analysis to evaluate and quantify its societal benefits and impacts.
- Showcase the potential for the research to be scaled, replicated, or adapted to diverse contexts, amplifying its impact and applicability.



# Assessment Tool

## Methodological Excellence, Innovation, and Creativity - Rating Scale (1-2)

| Assessment Elements                               | 0% - 25%  | 26% - 50%   | 51% - 75%  | 76% - 100%   |
|---|---|---|--|--|
| Methodological Rigor and Credibility              | Limited evidence of a structured methodology. The research lacks scientific validity, precision, or adherence to credible standards, leading to unreliable results. | The methodology demonstrates basic structure and credibility but lacks sophistication or robustness. While valid, it does not fully ensure consistent reliability or precision. | The methodology is well-structured, scientifically valid, and credible, ensuring accuracy and reliability in the research outcomes. Efforts reflect strong methodological rigor. | Exceptional methodological rigor with a solid scientific foundation. The research demonstrates precision, validity, and credibility, setting a benchmark for environmental studies.                                      |
| Integration of Innovative and Creative Approaches | Minimal or no evidence of innovation or creativity in the research. The approach relies heavily on conventional methods without challenging existing norms.         | Some innovative or creative elements are evident, but they are not consistently applied or lack significant impact on advancing environmental knowledge.                        | The research integrates innovative methodologies or creative approaches that challenge conventional thinking and contribute meaningfully to advancing environmental knowledge.   | Exemplary integration of innovative and creative approaches that redefine conventional methodologies, resulting in groundbreaking insights and advancing the field of environmental research.                            |
| Ethical Standards and Responsible Practices       | Little to no consideration of ethical standards. The research risks compromising stakeholder respect, data integrity, or responsible practices.                     | Ethical standards are addressed, but implementation is inconsistent or limited, reducing the credibility of the research.   | The research embeds ethical standards effectively, ensuring stakeholder respect, data integrity, and responsible practices throughout design and execution.                      | Exemplary integration of ethical standards, showcasing respect for stakeholders, rigorous data integrity, and a commitment to responsible research practices that set a new standard for ethical environmental research. |

## Methodological Excellence, Innovation, and Creativity - Rating Scale (2-2)

| Assessment Elements                | 0% - 25%  | 26% - 50%   | 51% - 75%  | 76% - 100%  |
|------------------------------------|---|---|--|---|
| Stakeholder Engagement in Research | Minimal or no engagement of stakeholders in the research process. Lack of participatory methods or efforts to include diverse perspectives in data collection.                    | Some engagement of stakeholders through occasional use of participatory methods. Efforts are made but are limited in scope and impact, lacking significant inclusivity.             | Good engagement of stakeholders with regular use of participatory methods such as focus groups and surveys. Research processes are inclusive, although there may be room for broader engagement. | Outstanding engagement of stakeholders. Research consistently incorporates comprehensive participatory methods, ensuring inclusivity and diverse perspectives are integral to data collection and validation, enhancing the credibility and relevance of research outcomes. |
| Overcoming Research Challenges     | Minimal evidence of effectively addressing research challenges. The strategies employed are inadequate, resulting in significant obstacles that compromise the research outcomes. | Some strategies to overcome research challenges are evident, but they only partially mitigate the issues, leading to some negative impacts on the research's integrity or outcomes. | Good demonstration of overcoming research challenges with effective strategies that largely ensure compliance with ethical standards and governance, though improvements could be made.          | Exceptional management of research challenges, employing innovative and effective strategies that ensure all issues are comprehensively addressed, maintaining the research's integrity and compliance throughout its lifecycle.  |



## Practical Relevance and Knowledge Sharing - Rating Scale (1-2)

| Assessment Elements                        | 0% - 25%   | 26% - 50%   | 51% - 75%  | 76% - 100%  |
|--|--|---|--|---|
| Bridging Theory and Practice               | Limited evidence of bridging theory and practice. The research lacks clear practical applications and fails to address real-world environmental challenges meaningfully.             | The research demonstrates some efforts to bridge theory and practice, resulting in localized or isolated applications that contribute to environmental improvements but lack transformative impact. | The research effectively bridges theory and practice, delivering transformative environmental solutions that address real-world challenges in a meaningful and impactful manner.                                   | Exemplary integration of theory and practice, producing transformative environmental solutions with significant real-world applications. Contributions set benchmarks for addressing global and local challenges. |
| Dissemination Through High-Impact Channels | Minimal or no dissemination of research findings. Efforts lack reach, failing to engage diverse or significant audiences through impactful channels.                                 | Dissemination efforts are evident but limited in reach or impact. Findings are shared through a small number of channels, with limited engagement across diverse audiences.                         | The research findings are proactively disseminated through high-impact channels, including peer-reviewed publications, international conferences, or educational initiatives, ensuring broad reach and engagement. | Outstanding dissemination of research findings through diverse and high-impact channels. Efforts ensure widespread engagement with global and local audiences, maximizing the research's reach and influence.     |
| Collaboration Across Fields and Sectors    | Little to no evidence of collaboration across fields or sectors. The research is conducted in isolation, reducing its relevance and potential applications for diverse stakeholders. | Some collaboration across fields or sectors is evident, but it lacks depth or strategic alignment, limiting its overall impact and relevance.   | The research demonstrates meaningful collaboration across fields or sectors, involving academia, industry, or government partnerships to enhance its relevance and usefulness to various stakeholders.             | Exceptional collaboration across diverse fields and sectors, fostering interdisciplinary partnerships that maximize the research's relevance, applications, and impact across multiple stakeholder groups.        |
| Educational Impact and Capacity Building   | Limited or no evidence of the research serving as an educational tool. Efforts to raise awareness or build capacity among stakeholders are minimal or nonexistent.                   | Some efforts are made to use the research as an educational tool, but these are limited in scope, reach, or long-term impact.   | The research effectively serves as an educational tool, raising awareness and building capacity among stakeholders to advance sustainability goals and drive meaningful change.                                    | Outstanding use of the research as an educational tool, fostering widespread awareness, building capacity, and inspiring long-term, impactful changes among diverse stakeholder groups.                           |

## Practical Relevance and Knowledge Sharing - Rating Scale (2-2)

| Assessment Elements                                    | 0% - 25%  | 26% - 50%   | 51% - 75%  | 76% - 100%   |
|--|---|---|--|--|
| Impact of Research on Policy and Stakeholder Decisions | Minimal or no evidence that research findings influence policymaker or stakeholder decisions. Lack of metrics to measure uptake and impact. | Some research findings are considered by policymakers and stakeholders, but the influence is sporadic and not well measured. Limited implementation of effective metrics. | Good evidence that research findings are integrated into decision-making processes, with clear metrics showing the influence on policies and stakeholder actions.                            | Exceptional impact of research on policymaking and stakeholder decisions. Comprehensive metrics demonstrate the extensive uptake and influence of findings, driving significant changes in environmental policies and practices. |
| Managing Lessons Learned                               | Minimal or no management of lessons learned, with no adjustments made to enhance research relevance or effectiveness.                       | Some lessons are identified and managed, but adjustments are sporadic and partially effective, resulting in limited enhancements to the research process.                 | Good management of lessons learned with strategic adjustments to research approaches and stakeholder engagement, leading to noticeable improvements in the project's relevance and outcomes. | Excellent management of lessons learned, with proactive and strategic adjustments throughout the research lifecycle that significantly enhance its relevance, effectiveness, and impact.   |

## Impact and Outcome - Rating Scale (1-2)

| Assessment Elements                             | 0% - 25%  | 26% - 50%  | 51% - 75%   | 76% - 100%  |
|---|---|--|---|---|
| Addressing Critical Environmental Challenges    | Limited evidence of addressing critical environmental challenges. The research lacks measurable or transformative outcomes, and its focus on issues like biodiversity conservation, pollution reduction, or resource efficiency is minimal or indirect. | The research addresses some environmental challenges with measurable outcomes, but the impact is localized or moderate, lacking broader transformative results.    | The research effectively addresses critical environmental challenges, delivering significant and measurable outcomes in areas such as biodiversity conservation, pollution reduction, or resource efficiency. | Exemplary focus on critical environmental challenges, with measurable and transformative outcomes that lead to substantial advancements in biodiversity conservation, pollution reduction, and resource efficiency. |
| Broader Societal Significance                   | Minimal or no evidence of societal impact. The research fails to influence policies, industry practices, or community actions in a meaningful way.  | The research demonstrates some societal impact, influencing a limited scope of policies, practices, or community actions, but lacks broader reach or significance. | The research significantly contributes to societal change, influencing policies, industry practices, and community actions, demonstrating a meaningful impact on environmental sustainability.                | Outstanding societal significance, shaping transformative policies, revolutionizing industry practices, and driving impactful community actions, setting new standards for environmental contributions.             |
| Ripple Effect and Inspiring Further Initiatives | Limited or no evidence of inspiring further initiatives or creating a ripple effect of environmental benefits.  | The research inspires some follow-up initiatives or benefits but lacks widespread influence or a sustained ripple effect across sectors or regions.                | The research inspires further initiatives and creates a ripple effect, fostering environmental benefits that extend across multiple sectors or regions.   | Exemplary ability to inspire and accelerate further initiatives, creating a far-reaching and sustained ripple effect of environmental benefits across sectors, regions, and communities.                            |

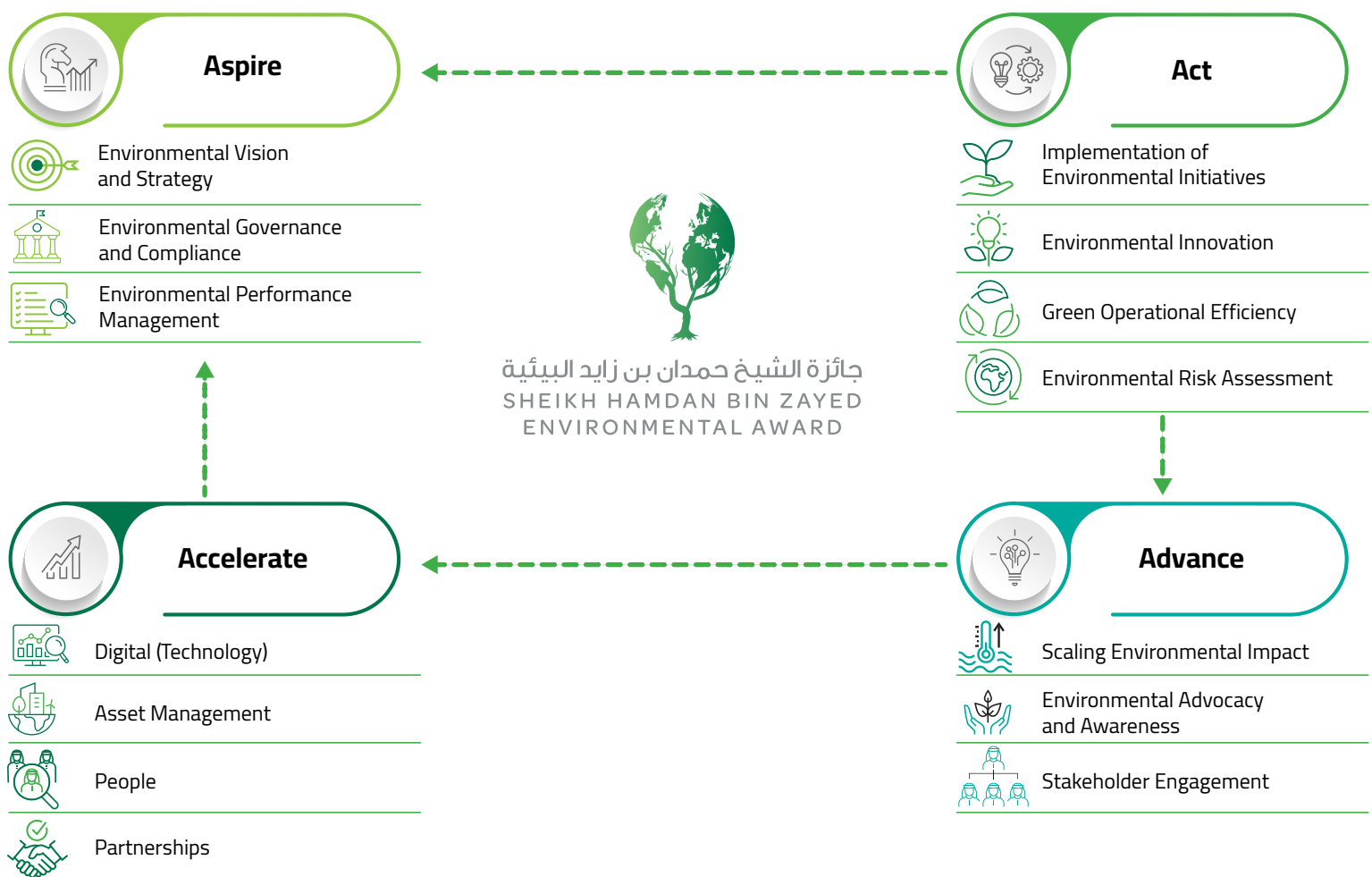


## Impact and Outcome - Rating Scale (2-2)

| Assessment Elements                       | 0% - 25%  | 26% - 50%   | 51% - 75%   | 76% - 100%  |
|---|---|---|---|---|
| Measurable Outcomes and Societal Benefits | Minimal or no measurable outcomes or societal benefits. Research impacts are not quantified, with no evidence of SROI or similar metrics.                   | Some measurable outcomes are evident, such as modest improvements in resource efficiency or pollution mitigation. However, societal benefits are limited in scope or significance, with sparse use of SROI metrics. | Strong measurable outcomes, including significant reductions in environmental impact, with a clear demonstration of societal benefits through well-documented SROI analysis or similar metrics. | Outstanding measurable outcomes and societal benefits, with substantial and transformative results that are well quantified. Research consistently demonstrates high Social Return on Investment, showcasing profound societal impacts and contributions to sustainability. |
| Scalability and Adaptability              | Minimal or no evidence of scalability or adaptability. The research's impact is confined to its original context without potential for broader application. | The research shows some potential for scalability or adaptability, but efforts to replicate or adapt it across diverse contexts are limited.  | The research demonstrates strong potential for scalability and adaptability, with evidence of successful replication or adaptation across different contexts or regions.                        | Exceptional scalability and adaptability, showcasing the ability to replicate or adapt the research across diverse contexts and significantly amplify its impact and applicability.   |

# Appendix C:

## The Sheikh Hamdan bin Zayed Environmental Performance Award Model and Criteria



## Pillar 1: **35%** Aspire

---

### Criterion 1: Environmental Vision and Strategy

#### Environmental Vision and Strategy – Capabilities

This criterion evaluates how an organization establishes a long-term environmental vision aligned with global and local sustainability frameworks. A leading entity integrates environmental priorities into its mission, dedicates budgets for initiatives, implements cohesive strategies across all departments, and fosters accountability by embedding sustainability goals into performance evaluations.

- ➔ Showcase how the organization has a long-term environmental vision, demonstrating alignment with global and local sustainability frameworks like the UN SDGs and UAE Environmental Directions.
- ➔ Showcase how environmental priorities are integrated into the organization's mission, values, and culture, ensuring sustainable practices are consistently implemented across all levels.
- ➔ Highlight the allocation of a dedicated budget for environmental initiatives, showcasing the organization's commitment to sustainability priorities.
- ➔ Demonstrate how sustainability strategies are embedded across departments, functions, and projects, ensuring cohesive and organization-wide implementation.
- ➔ Provide evidence of proactive horizon scanning to anticipate future environmental risks, opportunities, and trends, utilizing data and analytics to shape strategic priorities and guide decision-making.

#### Environmental Vision and Strategy – Results

This criterion evaluates the outcomes of an organization's environmental vision and strategy. A leading entity demonstrates alignment of goals with SDGs or UAE Environmental Directions, achieves measurable contributions to SDG indicators, and ensures departmental and strategic plans embed sustainability objectives. Results may include:

- ➔ Percentage of organizational goals mapped to specific SDGs or UAE Environmental Directions.
- ➔ Results related to the achievement of targeted contributions to specific SDG indicators (e.g., clean water, affordable energy).
- ➔ Percentage of strategic initiatives aligned with environmental objectives.
- ➔ Percentage of departments with sustainability targets embedded in their plans.
- ➔ Improvement in sustainability performance index scores.

- Results related to budget allocated for addressing environmental Priorities.
- Results related to employee's performance based on measurable environmental outcomes, emphasizing their contribution to improving the organization's environmental performance.

## **Criterion 2:** **Environmental Governance and Compliance**

### **Environmental Governance and Compliance – Capabilities**

This criterion evaluates how an organization establishes strong governance frameworks that ensure environmental compliance while driving innovation. A leading entity proactively adheres to local and international regulations, implements measures to exceed compliance standards, and fosters accountability across its value chain. Systematic audits and corrective actions support continuous improvement, ensuring robust governance and ethical practices.

- Showcase how the entity has a robust governance frameworks that not only ensure environmental compliance but also drive innovation across organizational processes.
- Highlight the organization's proactive adherence to local, national, and international environmental regulations, emphasizing measures taken to exceed compliance standards and foster accountability.
- Outline measures implemented to monitor and enforce compliance across the value chain, including suppliers, contractors, and other stakeholders.
- Showcase proactive actions taken to exceed baseline regulatory requirements, setting benchmarks for industry-leading environmental performance.
- Present evidence of systematic audits and the implementation of corrective measures to address compliance gaps, ensuring continuous improvement in environmental governance.



## **Environmental Governance and Compliance – Results**

This criterion evaluates measurable outcomes of an organization's governance and compliance efforts. A leading entity demonstrates adherence to environmental laws, implements sustainable governance policies, and engages suppliers in sustainability practices. Results may include:

- ➔ Results related to the compliance with local, national, and international environmental laws and standards.
- ➔ Results related to the implementation of sustainability governance policies implemented.
- ➔ Percentage of suppliers adopting sustainability practices aligned with organizational goals.
- ➔ Percentage annual increase in overall sustainability performance scores (internal or third-party evaluation).
- ➔ Percentage of reduction in environmental impact metrics (e.g., carbon emissions, water usage) compared to regulatory baselines.
- ➔ Number of Sustainability Reports Published Following GRI or Equivalent Standard.

## **Criterion 3:** **Environmental Performance Management**

### **Environmental Performance Management – Capabilities**

This criterion evaluates how an organization deploys robust systems to measure and manage environmental performance across key areas such as energy use, waste, and emissions. The entity integrates advanced technologies and data analytics to establish transparent internal reporting mechanisms. Benchmarking metrics against industry standards and defining department-specific KPIs ensure continuous improvement & alignment with sustainability goals.

- ➔ Highlight the deployment of comprehensive performance management system to measure and evaluate environmental performance, covering key areas such as energy consumption, waste reduction, and emissions management.
- ➔ Showcase the integration of data analytics and advanced technologies to drive real-time monitoring and continuous enhancement of environmental outcomes.
- ➔ Showcase the establishment of internal reporting mechanisms, including quarterly, semi-annual, and annual reporting of key environmental outcomes to ensure transparency and accountability.
- ➔ Demonstrate how performance metrics are benchmarked against industry standards or peer organizations to identify opportunities for continuous improvement and leadership in environmental sustainability.
- ➔ Demonstrate how department-specific KPIs are identified and categorized, contributing to a cohesive and comprehensive presentation of environmental sustainability results with clear and measurable targets.

## Environmental Performance Management – Results

This criterion evaluates the measurable outcomes of environmental performance management systems. A leading entity demonstrates alignment of environmental KPIs with organizational goals, adoption of KPIs across departments, and accurate real-time data monitoring. Results may include:

- ➔ Percentage of alignment of environmental KPIs with organizational goals and international frameworks.
- ➔ Adoption rate of defined Environmental KPIs across all departments within the first year of implementation.
- ➔ Accuracy rate in real-time data collected for energy, waste, and emissions metrics.
- ➔ Percentage of improvement in ranking on sustainability indexes.

**Pillar 2:** 35%  
Act

## Criterion 4:

### Green Operational Efficiency

#### Green Operational Efficiency – Capabilities

This criterion evaluates how an organization optimizes operational processes to reduce environmental impact, focusing on clean energy, sustainable sourcing, and renewable resources. A leading entity integrates green technologies, effectively manages facilities, and adapts to evolving environmental challenges. It emphasizes structured policies to manage waste and mitigate harm, demonstrating resilience and proactive environmental stewardship.

- ➔ Demonstrate how the organization has optimized operational processes to minimize environmental impact, emphasizing commitment to clean energy, sustainable sourcing, and renewable resource utilization.
- ➔ Showcase how the organization has integrated green technologies into operations, illustrating how innovative tools and systems enhance sustainability and efficiency.
- ➔ Demonstrate the organization's agility and flexibility in adapting processes and services to evolving environmental challenges, showcasing resilience and the ability to respond to unexpected risks or opportunities.
- ➔ Highlight the adoption of robust policies and mechanisms to efficiently manage and reduce waste volumes, addressing all types of waste—including hazardous, industrial, medical, and electronic—while mitigating potential environmental harm.

## **Green Operational Efficiency – Results**

This criterion evaluates the outcomes of efforts to enhance operational efficiency with a focus on sustainability. A leading entity reduces waste volumes, increases recycling rates, and integrates environmentally friendly materials. Results may include:

- ➔ Results related to the volume of waste generated from the organization's operations.
- ➔ Percentage of materials that can be reused or recycled (recycling) to promote sustainable practices and reduce environmental impact.
- ➔ Results related to using environmentally friendly materials in organization's operations and production.
- ➔ Results related to the level of gas and solid emissions generated from operations.
- ➔ Percentage of total energy consumption sourced from renewable energy.
- ➔ Percentage reduction in energy consumption due to the integration of green technologies.
- ➔ Percentage reduction in waste generated through lifecycle impact considerations.
- ➔ Cost savings achieved through the implementation of sustainable practices and resource optimization.

## **Criterion 5:** **Implementation of Environmental Initiatives – Capabilities**

### **Implementation of Environmental Initiatives – Capabilities**

This criterion evaluates how an organization plans, executes, and monitors environmental initiatives. A leading entity demonstrates end-to-end processes, engages stakeholders, and aligns initiatives with sustainability goals. Evidence of past and ongoing initiatives, measurable outcomes, and significant investments highlight the organization's commitment to addressing environmental challenges and driving continuous improvement.

- ➔ Demonstrate the organization's end-to-end planning process for environmental initiatives and projects, including ideation, resource allocation, execution, and evaluation mechanisms.
- ➔ Highlight the involvement of stakeholders, such as employees, partners, and communities, in planning, executing, and supporting environmental initiatives.
- ➔ Provide evidence of successfully executed environmental initiatives, projects or programs, showcasing their objectives, outcomes, and contributions to addressing environmental challenges.
- ➔ Present a comprehensive list of past, ongoing, and future planned environmental initiatives or projects, emphasizing their alignment with sustainability goals and organizational priorities.

- ➔ Showcase how results and impacts of implemented initiatives are monitored and assessed, providing measurable outcomes and evidence of continuous improvement efforts.
- ➔ Highlight significant investments aimed at reducing carbon footprint, conserving resources, and leveraging innovative approaches to tackle environmental challenges, reinforcing alignment with the organizational vision.

### **Implementation of Environmental Initiatives – Results**

This criterion evaluates the measurable outcomes of implemented environmental initiatives. A leading entity demonstrates reductions in carbon emissions, waste diversion, and energy intensity. Results include stakeholder satisfaction, publicly documented project outcomes, and progress reports showcasing transparency and alignment with sustainability objectives. Results may include:

- ➔ Results related to the implemented environmental initiatives and projects demonstrating measurable environmental outcomes (e.g., percentage reduction in carbon emissions, waste diversion rate, energy use intensity, etc.).
- ➔ Results related to initiative's positive impact on stakeholders, including partners satisfaction and the successful exchange of environmental knowledge and practices.
- ➔ Results related to resources utilization achieved through the initiative, emphasizing specific results in areas such as cost savings, revenue generation, operational efficiency, or resource optimization.
- ➔ Results related to community engagement, reach and influence of the initiative such as the number of community members or organizations actively participating in the initiative, and/or increase in community awareness of environmental practices.



## Criterion 6: Environmental Innovation

### Environmental Innovation – Capabilities

This criterion evaluates how an organization develops and implements innovative solutions to address environmental challenges. A leading entity fosters creativity through structured innovation platforms, collaborates with external experts, and integrates global best practices. Case studies and benchmarking demonstrate the effectiveness, scalability, and impact of these innovations within the organization and beyond.

- ➔ Present innovative solutions the organization has developed or implemented to address key environmental challenges, highlighting their effectiveness and scalability.
- ➔ Provide case studies or examples of groundbreaking innovations that have driven meaningful environmental improvements within the organization or its ecosystem.
- ➔ Highlight the organization's innovation infrastructure, such as platforms or programs, designed to gather employee ideas, foster creativity, and develop actionable environmental projects or small-scale improvements.
- ➔ Showcase how collaboration with external entities, such as academia, research institutions, or industry experts, fosters innovation and supports the creation of impactful environmental solutions.
- ➔ Highlight benchmarking activities, showcasing how the organization has identified, adapted, and successfully integrated innovative environmental best practices from other organizations or global leaders.

### Environmental Innovation – Results

This criterion evaluates the measurable impact of environmental innovation efforts. A leading entity showcases externally recognized innovations, implements employee-submitted ideas, and initiates projects through internal programs. Results may include:

- ➔ Percentage of environmental innovations recognized for effectiveness by external assessments or certifications.
- ➔ Number of environmental innovations documented and showcased through case studies or reports.
- ➔ Percentage of submitted ideas within the organization implemented as actionable environmental projects.
- ➔ Percentage of environmental projects initiated through internal innovation programs.
- ➔ Percentage of environmental projects developed in collaboration with external entities (e.g., academia, research institutions).
- ➔ Percentage of identified best practices adapted and implemented successfully within the organization.

## Criterion 7: Environmental Risk Assessment

### Environmental Risk Assessment – Capabilities

This criterion evaluates how an organization identifies, evaluates, and mitigates environmental risks through comprehensive frameworks and proactive planning. A leading entity uses systematic methods like risk matrices, conducts regular impact assessments, and implements advanced mitigation and contingency plans. Preparedness is further enhanced through drills and training programs, ensuring organizational readiness for environmental emergencies.

- ➔ Showcase how the organization implements comprehensive risk identification and evaluation processes, ensuring potential environmental risks and opportunities are proactively integrated into strategic planning through robust frameworks and measures that comply with regulatory standards and minimize potential impacts.
- ➔ Demonstrate the use of systematic methods, such as risk matrices or scenario modeling, to analyze environmental risks, prioritizing them based on severity, likelihood, and potential environmental impacts.
- ➔ Highlight regular evaluations of both direct and indirect environmental impacts, including emissions, waste generation, and water usage, to ensure continuous monitoring and improvement.
- ➔ Provide evidence of developing and implementing mitigation plans to address identified risks, leveraging the latest technologies and best practices to minimize high-priority environmental risks effectively.
- ➔ Showcase comprehensive contingency plans for handling environmental emergencies, such as spills, leaks, or hazardous waste incidents, supported by regular drills and training programs to ensure organizational readiness.

### Environmental Risk Assessment – Results

This criterion evaluates measurable outcomes related to environmental risk management. A leading entity demonstrates timely execution of drills, effective implementation of emergency plans, and thorough evaluation of identified risks. Results may include:

- ➔ Results related to environmental drills conducted by the organization. (Examples: % of scheduled drills conducted on time, Participation Rate in Drills activities, % of success rate of the implemented drills).
- ➔ Results related to implementing emergency plans (Ex: % Compliance with emergency plan procedures, % of environmental Risks mitigated within specified timeframes, Number of incidents resolved within target time, etc).
- ➔ The percentage of potential environmental risks and opportunities identified across all operations and services.
- ➔ Number of risk assessments conducted annually to identify new and emerging environmental risks.
- ➔ The percentage of identified risks that are thoroughly evaluated and prioritized based on their potential impact.
- ➔ Percentage reduction in potential environmental impacts due to proactive risk mitigation measures.
- ➔ Average time taken to respond to and manage environmental incidents.

## Pillar 3: Advance

# 10%

### Criterion 8: Scaling Environmental Impact

#### Scaling Environmental Impact – Capabilities

This criterion evaluates an organization's ability to scale successful environmental initiatives across regions or units. A leading entity demonstrates structured plans, including toolkits and frameworks, to ensure consistency during replication. Adaptable approaches and innovations are highlighted to support scalability in diverse contexts while maintaining environmental integrity.

- ➔ Provide evidence of the scalability of successful initiatives, supported by case studies of other organizations adopting your practices.
- ➔ Demonstrate how initiatives have been expanded across different regions or business units, emphasizing structured planning and execution.
- ➔ Explain the methodologies and structured plans developed for scalability, including timelines, resource allocation, and stakeholder engagement strategies.
- ➔ Showcase the development of toolkits, guidelines, or sustainability resources, along with frameworks or protocols designed to maintain consistency during replication.
- ➔ Highlight approaches and innovations that ensure replicability in different contexts, such as adaptability to local regulations, environmental conditions, or cultural factors.

#### Scaling Environmental Impact – Results

This criterion evaluates measurable outcomes of scaling environmental initiatives. A leading entity reports the adoption of practices by other organizations, implementation across business units, and replication in varied contexts. Results may include:

- ➔ Number of organizations that have adopted any of your environmental practices.
- ➔ Percentage of business units where initiatives have been successfully implemented.
- ➔ Percentage of initiatives that have been successfully replicated in other contexts.
- ➔ Percentage of initiatives that achieve sustainable growth without compromising environmental goals.
- ➔ Results related to environmental impact, such as: Reduction in Carbon Emissions Across Scaled Unit, % of waste reduction, % of saved energy, etc.

## **Criterion 9:** **Environmental Advocacy and Awareness**

### **Environmental Advocacy and Awareness – Capabilities**

This criterion evaluates an organization's ability to design and implement impactful campaigns and initiatives that promote environmental sustainability. A leading entity uses creative approaches to influence policies, practices, and behaviors at multiple levels. Evidence of measurable impact, active participation in global forums, and partnerships highlight the organization's commitment to environmental advocacy.

- ➔ Highlight campaigns, programs, or initiatives designed to raise public awareness about environmental sustainability, emphasizing creative approaches and impactful messaging.
- ➔ Showcase how advocacy and awareness efforts have influenced policies, practices, or behaviors to advance sustainability at local, national, or global levels.
- ➔ Provide evidence of the measurable impact of advocacy initiatives, supported by data such as surveys, stakeholder feedback, or observed behavioral changes.
- ➔ Demonstrate active participation in global events, forums, or partnerships, leveraging these platforms to promote sustainability and advocate for environmental responsibility.

### **Environmental Advocacy and Awareness – Results**

This criterion evaluates the measurable outcomes of advocacy and awareness efforts. A leading entity demonstrates the launch of impactful campaigns, broad community engagement, and influence on policies and practices. Results may include:

- ➔ Number of environmental advocacy campaigns, programs, or initiatives launched annually.
- ➔ Results Related to Community Engagement, such as: (total number of people reached through these campaigns (e.g., social media impressions, event attendance), satisfaction Level of Participants, Number of community member participated in organizations' events, etc.
- ➔ Results Related to Policy and Practice Influence, such as: Adoption Rate of Suggested Practices, Number of new environmental laws or amendments introduced (e.g., plastic bag bans, water conservation mandates).
- ➔ Number of global and local environmental events, forums, or partnerships the organization participates in annually.
- ➔ Number of awards or recognitions received for advocacy and awareness efforts.



## Criterion 10: Stakeholder Engagement

### Stakeholder Engagement – Capabilities

This criterion evaluates how an organization identifies, categorizes, and actively engages stakeholders to enhance sustainability initiatives. A leading entity uses innovative mechanisms like digital platforms and participatory workshops, fosters multi-stakeholder collaborations, and systematically incorporates stakeholder feedback to drive organizational improvements and amplify environmental impact.

- ➔ The organization has a well-defined process to identify and categorize stakeholders based on their influence, interest, and impact on the organization, ensuring a comprehensive understanding of their needs, expectations, and concerns.
- ➔ Provide examples of innovative mechanisms, such as digital platforms or participatory workshops, that actively engage stakeholders in sustainability initiatives.
- ➔ Highlight successful multi-stakeholder collaborations that have enabled the scalability and amplification of environmental impact.
- ➔ Demonstrate how stakeholder feedback is systematically gathered, analyzed, and incorporated into organizational improvements to enhance sustainability outcomes.

### Stakeholder Engagement – Results

This criterion evaluates measurable outcomes of stakeholder engagement efforts. A leading entity demonstrates successful collaborations, stakeholder-driven program expansions, and improvements in key environmental metrics. Results may include:

- ➔ Results related to Collaborative impact, such as: number of multi-stakeholder collaborations and partnerships created, Number of collaborative sustainability initiatives launched, % of stakeholders reported positive outcomes as a result of the collaboration, Number of New Stakeholders Engaged, etc.
- ➔ Results related to impact of stakeholder engagement on environmental goals, such as, Number of environmental initiatives expanded due to stakeholder input, Total number of communities impacted by stakeholder-driven programs, and % improvement in key environmental metrics due to stakeholder collaboration (Emission reduction, water consumption reduction, waste reduction, etc.).
- ➔ Number of stakeholders engaged through various channels (e.g., events, digital platforms).
- ➔ Percentage of positive responses in stakeholder satisfaction surveys.

## Pillar 4: Accelerate 20%

### Criterion 11: Digital (Technology)

#### Digital (Technology) – Capabilities

This criterion evaluates how advanced technologies, such as AI, IoT, and blockchain, are leveraged to drive sustainability initiatives and enhance environmental performance. A leading entity demonstrates innovative applications of technology, including predictive analytics and real-time monitoring, to reduce environmental impact, optimize processes, and support informed decision-making.

- ➔ Showcase how advanced technologies, such as AI, IoT, blockchain, or other technology, are strategically leveraged to drive sustainability initiatives and achieve environmental goals.
- ➔ Highlight innovations utilizing emerging technologies to enhance efficiency, reduce environmental impact, and support sustainability objectives.
- ➔ Demonstrate the application of data analytics, including predictive models, to monitor, track, and optimize environmental performance, enabling informed decision-making.
- ➔ Provide evidence of leveraging technology in internal processes to align with best practices, reduce environmental impacts, and improve efficiency. Examples include utilizing AI for real-time risk monitoring, predictive maintenance, or optimizing production processes to minimize resource consumption and waste.

#### Digital (Technology) – Results

This criterion evaluates measurable outcomes from the use of advanced technologies in sustainability efforts. A leading entity showcases reductions in waste, emissions, and energy consumption, alongside improvements in decision-making efficiency and key environmental performance metrics through data-driven and technology-enabled approaches. Results may include:

Results related to environmental impact as a result of applying latest technology, such as, reduction in waste, reduction in Emission CO<sub>2</sub>, Amount of renewable energy produced or consumed, % of environmental risks detected and mitigated using technology.

- ➔ Results related to Digital Transformation, such as: % of processes digitized to monitor environmental impact, Number of IoT sensors installed for real-time monitoring, % improvement in decision-making time due to AI-powered systems.
- ➔ Percentage reduction in energy consumption due to the implementation of AI, IoT, or blockchain technologies.
- ➔ Percentage reduction in carbon emissions achieved through the use of advanced technologies.
- ➔ Percentage of improvement in key environmental performance metrics (e.g., energy use, emissions) due to data analytics.

## **Criterion 12:**

### **Asset Management**

#### **Asset Management – Capabilities**

This sub-criterion evaluates how an organization integrates sustainability into asset design, management, and maintenance. A leading entity optimizes infrastructure through environmentally friendly construction, lifecycle planning, and structured policies that enhance resource efficiency. Measures to reduce energy, water, and material consumption ensure alignment with sustainability goals.

- ➔ Highlight environmentally friendly design, construction practices, and retrofitting efforts aimed at enhancing the sustainability of existing infrastructure.
- ➔ Showcase how facilities and equipment are effectively managed and maintained to reduce negative environmental impacts, supported by the implementation of structured policies and mechanisms that ensure optimal outcomes.
- ➔ Demonstrate how physical assets are optimized to reduce environmental impact, ensuring alignment with sustainability goals.
- ➔ Provide evidence of lifecycle planning and assessments conducted to minimize resource consumption and promote sustainable use of materials.
- ➔ Highlight any measures implemented to reduce energy, water, and material consumption, showcasing improvements in resource efficiency.

#### **Asset Management – Results**

This sub-criterion evaluates measurable outcomes from sustainable asset management practices. A leading entity demonstrates reductions in energy and water consumption, lower emissions from transportation, minimized maintenance costs, and improved waste diversion rates, showcasing optimized resource use and environmental impact reduction. Results may include:

- ➔ Results related to reduction in energy consumption due to energy-efficient building designs and equipment.
- ➔ Results related to reduction in fuel consumption and emissions from transportation solutions.
- ➔ Results related to reduction in maintenance costs and downtime due to optimized asset management.
- ➔ Results related to reduction in water consumption due to implemented measures.
- ➔ Waste diversion rate (WDR) from landfills through recycling and repurposing efforts.

## Criterion 13:

### People

#### People – Capabilities

This criterion evaluates how an organization empowers its workforce to drive sustainability through training, leadership initiatives, and engagement in environmental efforts. A leading entity integrates environmental responsibility into recruitment, rewards employee contributions, and fosters a culture of sustainability through capacity-building programs and employee-led initiatives.

- ➔ Highlight training programs designed to build environmental awareness and sustainability skills among employees, supported by evidence of internal capacity-building initiatives.
- ➔ Demonstrate leadership initiatives that embed sustainability into operations, including mentorship programs aimed at developing future sustainability leaders.
- ➔ Showcase employee and community engagement in environmental initiatives, emphasizing collaborative efforts that drive meaningful change.
- ➔ Provide examples of incentives or recognition programs that reward employees for contributing to sustainability, including initiatives integrating sustainability into organizational reward systems.
- ➔ Highlight employee-led initiatives that directly contribute to enhancing operational sustainability, showcasing their role in driving environmental progress.
- ➔ Emphasize the integration of environmental responsibility into recruitment, onboarding, and employee development processes, fostering a workforce aligned with the organization's environmental values and culture.

#### People – Results

This criterion evaluates measurable outcomes of workforce engagement in sustainability. A leading entity demonstrates high participation in training programs and environmental initiatives, increased recognition of sustainability contributions, and successful implementation of employee-led projects that achieve meaningful environmental goals. Results may include:

- ➔ Percentage of employees who complete the sustainability training programs.
- ➔ Number of employees identified and trained as future sustainability leaders.
- ➔ Percentage of employees actively participating in environmental initiatives.
- ➔ Number of community engagement activities organized and the level of participation.
- ➔ Results related to Incentives or recognition awards given to employees for sustainability contributions.
- ➔ Percentage of employee-led projects that successfully achieve their sustainability goals.



## Criterion 14: Partnerships

### Partnerships – Capabilities

This criterion evaluates an organization's ability to establish and leverage strategic partnerships to achieve environmental goals. A leading entity collaborates with research institutions, startups, and cross-industry partners to co-create innovative solutions. Evidence includes impactful initiatives, resource sharing, and contributions to global environmental objectives through partnership-driven programs.

- ➔ Demonstrate how the organization ability to identify and establish strategic partnerships that align with its environmental objectives, including collaborations with research institutions to develop innovative sustainable technologies or solutions.
- ➔ Showcase how shared resources and expertise within partnerships contribute to achieving environmental goals and fostering innovation.
- ➔ Showcase how the organization fosters innovation by leveraging partnerships to co-create or adopt advanced solutions to environmental challenges, such as co-developing carbon capture technologies with research institutions or partnering with startups to implement AI-driven environmental monitoring systems.
- ➔ Highlight cross-industry partnerships that tackle systemic environmental issues, emphasizing unique contributions from diverse sectors.
- ➔ Provide evidence of how partnerships contribute to achieving global environmental goals, such as carbon neutrality, and earning recognition or awards for impactful, partnership-driven programs that advance sustainability initiatives.

### **Partnerships – Results**

This criterion evaluates measurable outcomes from partnership efforts. A leading entity demonstrates the establishment of strategic collaborations, resource-sharing initiatives, and contributions to SDGs. Results may include:

- ➔ Results related to strategic partnership development, such as, number of strategic partnerships established annually, % of partnerships aligned with the organization's environmental goals, and increase in funding or resources obtained through partnerships.
- ➔ Results related to resource sharing and capacity building, such as, number of training programs or workshops conducted through partnerships, and number of local communities empowered with tools and resources through partnerships.
- ➔ Results related to contribution to global goals, such as, % of partnership initiatives contributing to specific SDGs (e.g., SDG 13 on Climate Action), and number of global or regional recognitions earned for partnership-driven achievements.





# Pillars & Weights Criteria



## 4A's Aspire | Act | Advance | Accelerate

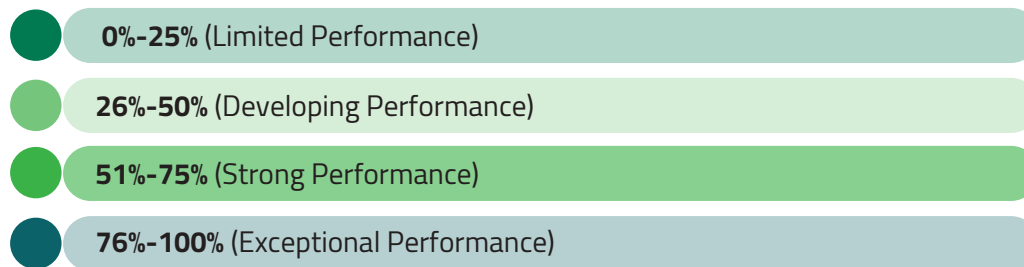
| Pillar     | Weight | Criteria                                    | Weight |
|------------|--------|---|--------|
| Aspire     | 35%    | Environmental Vision and Strategy           | 40%    |
|            |        | Environmental Governance and Compliance     | 30%    |
|            |        | Environmental Performance Management        | 30%    |
| Act        | 35%    | Implementation of Environmental Initiatives | 35%    |
|            |        | Environmental Innovation                    | 20%    |
|            |        | Green Operational Efficiency                | 30%    |
|            |        | Environmental Risk Assessment               | 15%    |
| Advance    | 10%    | Scaling Environmental Impact                | 40%    |
|            |        | Environmental Advocacy and Awareness        | 30%    |
|            |        | Stakeholder Engagement                      | 30%    |
| Accelerate | 20%    | Digital (Technology)                        | 30%    |
|            |        | Asset Management                            | 15%    |
|            |        | People                                      | 30%    |
|            |        | Partnerships                                | 25%    |



# Assessment Tool

The assessment framework evaluates organizational performance based on two key dimensions: Capabilities (60%) and Results (40%). Capabilities measure the organization's ability to develop and implement effective frameworks, methodologies, while Results assess the effectiveness and impact of these capabilities in achieving strategic goals.

## The scoring matrix is divided into four performance bands:



## Assessment Tool

| The Assessment tool       | Dimension  |
|---------------------------|--|
| <b>Capabilities (40%)</b> | Capabilities represent the organization's ability to develop and implement effective frameworks, methodologies ensuring agility, innovation, and continuous improvement. This includes the comprehensiveness of structures, integration of best practices, adaptability to challenges, and fostering a culture of learning and innovation. A strong capability framework ensures that the organization is well-equipped to achieve its strategic objectives efficiently. |
| <b>Results (60%)</b>      | Results measure the organization's performance in achieving strategic goals, delivering impact, and demonstrating sustained progress over time. This includes setting ambitious yet logical targets, tracking and improving performance indicators, and ensuring continuous positive trends. High-performing organizations not only achieve their goals but also create measurable impact and set benchmarks in their field.   |

## Capability Scoring Matrix

|                              | Assessment Question   | 0% - 25%   | 26% - 50%  | 51% - 75%   | 76% - 100%   |
|------------------------------|---|--|--|---|--|
| Framework (50%)              | Is the framework comprehensive and aligned with best practices?   | The framework is not comprehensive and does not align with best practices, lacking clarity and depth.        | The framework is partially comprehensive and aligned with some best practices, but significant gaps exist.     | The framework is mostly comprehensive and aligned with best practices, with minor improvements needed.                                | The framework is fully comprehensive, aligned with best practices, and effectively supports the capability's objectives.   |
|                              | Are environmental considerations embedded across all capabilities to ensure organization-wide integration?  | Environmental considerations are not embedded in capabilities across the organization.                       | Environmental considerations are inconsistently embedded in capabilities, with limited scope or application.   | Environmental considerations are largely embedded in capabilities, with moderate integration across the organization.                 | Environmental considerations are fully embedded in all capabilities, ensuring seamless organization-wide integration.  |
| Agility (25%)                | Does the framework demonstrate agility by incorporating flexibility, proactiveness, and adaptability to address environmental challenges effectively? | The framework lacks agility, showing rigidity and a reactive approach to environmental challenges.           | The framework demonstrates some agility, with moderate flexibility and proactiveness but limited adaptability. | The framework is largely agile, with high levels of flexibility, proactiveness, and adaptability in most scenarios.                   | The framework is highly agile, consistently demonstrating flexibility, proactiveness, and adaptability to address environmental challenges effectively.                                      |
| Learning and Innovation(25%) | Are the framework periodically reviewed for enhancements and updated based on emerging needs?   | Approach not reviewed, and there is no focus on enhancements or updates.                                     | Capabilities are reviewed occasionally, but updates are inconsistent and reactive.                             | Capabilities are reviewed regularly, with proactive enhancements in most cases.   | Capabilities are continuously reviewed and updated to align fully with emerging trends and needs.  |
|                              | Are innovative approaches leveraged to support the development of capability approaches to address current and future environmental challenges?       | Innovation is not utilized to support the development of capability approaches, relying on outdated methods. | Innovation is occasionally applied to the development of capability approaches, with limited effectiveness.    | Innovation is actively used to enhance the development of capability approaches in most cases, contributing to moderate improvements. | Innovation is systematically and fully integrated into the development of capability approaches, driving significant advancements in addressing current and future environmental challenges. |

## Results Scoring Matrix (1-2)

|   | Assessment Question  | 0% - 25%   | 26% - 50%   | 51% - 75%   | 76% - 100%   |
|---|--|--|---|---|--|
| Comprehensiveness and Usability (50%)   | Are all appropriate indicators and results measured to monitor, understand, and predict the performance of capabilities and strategic goals? | Indicators are not measured, making it impossible to monitor or predict performance effectively.   | Indicators are partially measured but lack alignment with capabilities or strategic goals.        | Most appropriate indicators are measured, supporting performance monitoring and prediction.         | All relevant indicators are consistently measured, enabling accurate monitoring, prediction, and strategic alignment.      |
|   | Are the results reviewed and updated to ensure accuracy, reliability, and usability for performance transformation and improvement?          | Results are neither reviewed nor updated, leading to inaccuracies and inefficiencies in their use. | Results are reviewed occasionally, but updates are inconsistent and usability is limited.         | Results are regularly reviewed and updated, ensuring moderate accuracy, reliability, and usability. | Results are systematically reviewed and updated, ensuring high accuracy, reliability, and easy usability for improvements. |
| Achievement of Results and Impact (40%) | Are the set targets logical and ambitious?   | Targets are neither logical nor ambitious, failing to inspire performance improvement.             | Targets are somewhat logical and ambitious but lack full alignment with organizational potential. | Targets are logical and ambitious, driving significant improvement in most areas.                   | Targets are highly logical and ambitious, fully aligned with organizational potential and driving maximum performance.     |
|   | Are targets achieved?  | Targets are rarely or never achieved.  | Targets are achieved inconsistently, with limited success in some areas.                          | Targets are mostly achieved, demonstrating substantial progress toward goals.                       | Targets are consistently achieved or exceeded across all areas.  |

## Results Scoring Matrix (2-2)

|   | Assessment Question  | 0% - 25%  | 26% - 50%  | 51% - 75%   | 76% - 100%   |
|---|--|---|--|---|--|
| Achievement of Results and Impact (40%) | Is the desired impact of results attained upon the achievement of targets?   | Results fail to create the desired impact, even when targets are achieved.                      | Desired impact is achieved inconsistently, with limited benefits in certain areas.               | Desired impact is achieved in most cases, creating measurable benefits.                 | Desired impact is fully achieved, demonstrating significant benefits across all areas.                                       |
|   | Do the results show positive trends across the years, indicating sustained progress?   | Results show no positive trends, with stagnation or decline across key performance areas.       | Results show limited positive trends, with inconsistency across key areas.                       | Results show consistent positive trends in most areas, reflecting sustained progress.   | Results show strong positive trends across all areas, demonstrating sustained and significant progress over time.            |
| Pioneering (10%)                        | Do the organization's results demonstrate leadership and innovation in comparison to other entities locally and internationally? | Results show no leadership or innovation compared to others, with significant competitive gaps. | Results show limited leadership or innovation compared to others, with moderate competitiveness. | Results show strong leadership and innovation, with high competitiveness in most areas. | Results demonstrate exceptional leadership, innovation, and competitiveness, setting benchmarks locally and internationally. |



# Appendix D:

## The Sheikh Hamdan bin Zayed Environmental Corporate Initiative Award Model and Criteria

### Criterion 1:

Initiative Overview,  
Structure and Execution

# 30%

This criterion assesses the overall structure and execution of the initiative. It assesses the clarity of its objectives, the effectiveness of its collaborative or community-driven strategies, and the efficiency of its management in execution and stakeholder engagement to achieve environmental goals.

- Demonstrate how the initiative aligns with the organization's broader sustainability or corporate strategy. Highlight its contribution to achieving long-term environmental strategies or commitments.
- Present the nature and objectives of the environmental initiative, highlighting its core purpose in tackling sustainability challenges.
- Showcase the strategic planning and implementation of the environmental initiative, emphasizing how its design enabled effective execution.
- Illustrate how the environmental initiative managed and adapted to conflicts and challenges. Focus on strategies that maintained project integrity and ensured continued stakeholder engagement and initiative progression.
- Demonstrate the effectiveness of the communication strategies used, highlighting how transparency and inclusive decision-making contributed to broader engagement, trust-building, and the overall success of the initiative.



## Criterion 2: Creativity and Innovation

---

# 20%

This criterion assesses how the initiative uses innovative and creative approaches in addressing environmental challenges. It emphasizes the originality of methods and the strategic use of advanced technologies to innovate and set new benchmarks in environmental sustainability.

- ➔ Demonstrate how the initiative employs innovative and creative approaches, introducing unique and forward-thinking solutions to address environmental challenges.
- ➔ Showcase how advanced technologies were strategically integrated to initiative , demonstrating cutting-edge solutions and modern tools that maximize impact.
- ➔ Highlight the originality of methods and tools used in the initiative, showcasing how it moves beyond conventional practices to inspire new benchmarks in environmental sustainability.
- ➔ Highlight how the initiative establishes new practices for sustainability, driving change and inspiring others through pioneering practices and creative problem-solving.
- ➔ Showcase how the initiative leverages cross-sectoral partnerships to co-create innovative solutions, integrating insights from diverse fields to tackle complex challenges effectively.

## Criterion 3: Sustainability and Scalability

---

# 20%

This criterion evaluates the initiative's potential for long-term sustainability and its ability to be scaled or adapted across different contexts. It focuses on the initiative's alignment with broader environmental strategies, such as UAE environmental directions or the UN SDGs, and assesses the capability to maintain relevance and effectiveness in the face of evolving environmental challenges.

- ➔ Provide evidence of how the initiative is strategically designed for long-term sustainability, ensuring that its environmental impacts are durable and extend beyond the initial implementation.
- ➔ Highlight how the initiative aligns with broader environmental strategies, such as the UAE Environmental Directions or the UN Sustainable Development Goals, demonstrating how it contributes to larger sustainability efforts.
- ➔ Demonstrate how the initiative has been systematically documented and shared to facilitate its replication or scaling across other regions, sectors, or communities, enhancing its broader applicability.
- ➔ Demonstrate the initiative's agility in anticipating and responding to emerging environmental challenges, showcasing its ability to adapt seamlessly to shifting circumstances, evolving priorities, and advancements in technology.





#### Criterion 4: Impact and outcomes

# 30%

This criterion assesses the measurable environmental outcomes achieved by the initiative. The emphasis is on tangible results, reach, and the initiative's influence in addressing environmental challenges.

- ➔ Showcase the quantifiable improvements last 1-4 Years achieved directly through the initiative, emphasizing specific results in areas such as carbon reduction, waste minimization, energy efficiency, or biodiversity enhancement.
- ➔ Showcase the resources utilization achieved through the initiative, emphasizing specific results in areas such as cost savings, revenue generation, operational efficiency, or resource optimization.
- ➔ Demonstrate the reach and influence of the initiative, showing how it has effectively engaged diverse stakeholders—from communities to organizations, such as Number of community members or organizations actively participating in the initiative, increase in community awareness of environmental practices.
- ➔ Demonstrate the initiative's positive impact on stakeholders, including partner satisfaction and the successful exchange of environmental knowledge and practices.
- ➔ Highlight the awards and recognitions received, along with the initiative's ongoing learning and capacity-building efforts, including training sessions, certifications, and knowledge-sharing with partners, demonstrating the initiative's impact and excellence in environmental sustainability.



# Assessment Tool

## Initiative Overview, Structure and Execution - Rating Scale (1-2)

| Assessment Elements                   | 0% - 25%   | 26% - 50%  | 51% - 75%  | 76% - 100%   |
|---------------------------------------|--|--|--|--|
| Alignment with Broader Strategies     | There is no evident alignment with broader sustainability or corporate strategies; the initiative operates independently, contributing little to the organization's long-term environmental goals. | Moderate alignment with broader strategies; the initiative contributes to the organization's sustainability efforts, but integration is superficial or inconsistently applied.   | Good alignment with broader strategies; the initiative is a significant part of the organization's sustainability efforts, consistently contributing to its long-term goals.   | Excellent alignment; the initiative is seamlessly integrated with the organization's sustainability strategy, driving major contributions to long-term environmental strategies and achieving substantial impacts.                       |
| Clarity of Objectives                 | There is little to no clarity in the objectives. The initiative lacks a clear direction or purpose, significantly hindering its effectiveness and relevance to sustainability challenges.          | The objectives are moderately clear. They provide a basic understanding of the initiative's goals but lack detailed alignment with broader sustainability challenges, making it difficult to gauge the potential impact fully. | The objectives are well-defined. They give a clear picture of the initiative's purpose and are aligned with sustainability challenges, although some minor aspects may still need greater detail or clarity.               | The objectives are exceptionally clear and detailed, explicitly aligned with critical sustainability challenges. They are communicated effectively, ensuring all stakeholders understand the initiative's purpose and expected outcomes. |
| Strategic Planning and Implementation | Strategic planning is absent or very poor, with little to no effective implementation. Efforts are disorganized, resulting in minimal progress toward environmental goals.                         | There is moderate evidence of strategic planning. Some parts of the initiative are implemented according to the plan, but there are significant gaps in execution, leading to uneven progress and effectiveness.               | Strategic planning is robust, with most of the initiative implemented effectively. Execution aligns well with planned activities, although some areas might benefit from more precise coordination or resource allocation. | Strategic planning and implementation are exemplary. The initiative is executed flawlessly, with every aspect carefully planned and managed to ensure maximum effectiveness and alignment with environmental goals.                      |



## Initiative Overview, Structure and Execution - Rating Scale (2-2)

| Assessment Elements                    | 0% - 25%  | 26% - 50%  | 51% - 75%  | 76% - 100%   |
|--|---|--|--|--|
| Management of Conflicts and Challenges | Conflicts and challenges are poorly managed, frequently leading to severe disruptions that compromise the initiative's integrity and outcomes.            | Conflicts and challenges are moderately managed with some effective resolutions that occasionally prevent major disruptions, though some issues may persist.                               | Effective management of conflicts and challenges; strategies usually lead to successful resolutions that maintain the initiative's integrity and facilitate continued progress.    | Conflicts and challenges are exceptionally managed with proactive and innovative strategies that prevent any disruptions and enhance the initiative's success, demonstrating foresight and adaptability. |
| Communication Strategies               | Communication strategies are ineffective, lacking transparency and inclusivity, which leads to frequent misunderstandings and low stakeholder engagement. | Communication strategies show moderate transparency and attempts at inclusivity; they are somewhat effective but do not consistently engage all stakeholders or foster full collaboration. | Communication strategies are well-implemented, generally transparent, and inclusive, fostering effective collaboration and high levels of stakeholder engagement most of the time. | Communication strategies are exemplary, characterized by complete transparency and inclusivity, ensuring optimal levels of collaboration, engagement, and stakeholder satisfaction.                      |

## Creativity and Innovation - Rating Scale (1-2)

| Assessment Elements                  | 25% - 0%  | 50% - 26%  | 75% - 51%  | 100% - 76%   |
|--------------------------------------|---|--|--|--|
| Innovative and Creative Approaches   | Displays minimal innovation or creativity; approaches are largely conventional and demonstrate negligible advancements in addressing environmental challenges.                      | Displays moderate innovation and creativity; some approaches are unique but may not fully capitalize on the potential to address environmental challenges effectively.                       | Shows significant innovation and creativity; approaches are generally unique and effectively address environmental challenges, although there may be room for further innovation.                        | Exemplifies outstanding innovation and creativity; approaches are highly unique and exceptionally effective in addressing environmental challenges, setting new industry benchmarks.                                 |
| Integration of Advanced Technologies | Minimal or no integration of advanced technologies. The initiative shows little reliance on modern tools or methods, resulting in negligible enhancement of environmental outcomes. | Moderate integration of advanced technologies. Some use of modern tools is evident, but it is not strategically applied or lacks significant impact on environmental sustainability.         | Good integration of advanced technologies. The initiative makes strategic use of modern tools and methods that clearly contribute to its success and impact in addressing environmental challenges.      | Excellent integration of advanced technologies. The initiative showcases cutting-edge solutions that are central to its strategy, significantly enhancing environmental outcomes and setting new industry standards. |
| Originality of Methods and Tools     | Little to no originality in methods and tools. The initiative relies on outdated or conventional approaches with limited effectiveness in promoting sustainability.                 | Moderate originality in methods and tools. While some innovative approaches are employed, they do not consistently deliver new solutions or substantially move beyond traditional practices. | High degree of originality in methods and tools. The initiative frequently introduces novel approaches that are effective in addressing environmental challenges and improving sustainability practices. | Exceptional originality in methods and tools. The initiative continuously breaks new ground with its approaches, significantly advancing environmental sustainability and inspiring sector-wide innovation.          |

## Creativity and Innovation - Rating Scale (2-2)

| Assessment Elements                               | 25% - 0%  | 50% - 26%  | 75% - 51%  | 100% - 76%  |
|---|---|--|--|---|
| Establishment of New Practices for Sustainability | The initiative has not established any new practices for sustainability; it follows existing methods with no innovation.                | Moderate establishment of new practices. Some new sustainability practices are developed, but their impact is limited and does not significantly influence broader change. | Strong establishment of new practices. The initiative has introduced effective sustainability practices that have begun to influence changes within the organization or community. | Pioneering new practices for sustainability. The initiative is a leader in developing and implementing innovative practices that set benchmarks for the sector, driving significant and transformative changes.             |
| Cross-sectoral Partnerships                       | No effective use of cross-sectoral partnerships; efforts to co-create solutions are non-existent or fail to integrate diverse insights. | Moderate use of cross-sectoral partnerships; some co-creation of solutions occurs, but integration of diverse insights is sporadic and often superficial.                  | Good utilization of cross-sectoral partnerships; effectively co-creates innovative solutions and integrates insights from various fields to tackle environmental challenges.       | Excellent utilization of cross-sectoral partnerships; masterfully co-creates highly innovative solutions, integrating a wide range of insights from diverse fields to effectively address complex environmental challenges. |

## Sustainability and Scalability - Rating Scale

| Assessment Elements                       | 25% - 0%   | 50% - 26%   | 75% - 51%  | 100% - 76%  |
|---|--|---|--|---|
| Long-term Sustainability Design           | Minimal evidence of strategic design for long-term sustainability; the initiative shows little to no durability or lasting impact.               | Moderate evidence of strategic design; some elements suggest potential for long-term sustainability, but these are not comprehensively implemented or detailed. | Good evidence of a well-thought-out design for long-term sustainability; most elements are effectively integrated, ensuring a durable impact.                  | Excellent and comprehensive design for long-term sustainability; all elements are expertly integrated, ensuring a robust and enduring impact.                                     |
| Alignment with Environmental Strategies   | Shows little to no alignment with broader environmental strategies; efforts are isolated and do not contribute to larger sustainability goals.   | Shows moderate alignment with broader strategies; some efforts contribute to sustainability goals but lack integration or significant impact.                   | Strong alignment with broader environmental strategies; consistently contributes to larger sustainability efforts and shows integration with global standards. | Exceptional alignment with the most advanced environmental strategies; leadership role in contributing to and shaping sustainability efforts on a global scale.                   |
| Documentation and Sharing for Scalability | No effective documentation or sharing practices in place; lacks any structured approach to facilitate scalability or replication.                | Moderate documentation and sharing practices; some structured efforts are evident, but they are not sufficiently detailed to enable effective scalability.      | Good documentation and sharing practices; systematic and well-structured approaches are in place, facilitating scalability across different contexts.          | Excellent documentation and sharing practices; highly systematic and detailed, ensuring easy replication and scalability across diverse regions and sectors.                      |
| Flexibility and Adaptability              | Demonstrates minimal flexibility; fails to anticipate or adapt to changing environmental challenges, showing rigidity in approach and execution. | Shows moderate flexibility; some ability to adapt to changes, but responses are often reactive rather than proactive.   | Good flexibility and adaptability; generally anticipates changes and adapts strategies effectively, though improvements could be made.                         | Exceptional flexibility and adaptability; proactively anticipates emerging challenges and adapts strategies seamlessly, ensuring relevance and effectiveness in dynamic contexts. |



## Impact and Outcomes - Rating Scale (1-2)

| Assessment Elements                             | 25% - 0%   | 50% - 26%  | 75% - 51%  | 100% - 76%   |
|---|--|--|--|--|
| Quantifiable Environmental Improvements         | Minimal or no evidence of quantifiable environmental improvements. The initiative shows negligible impact on carbon reduction, waste minimization, energy efficiency, or biodiversity enhancement. | Moderate evidence of environmental improvements. There are measurable but limited impacts in key areas such as carbon reduction or energy efficiency.                            | Significant evidence of environmental improvements. The initiative demonstrates substantial results in reducing waste, enhancing energy efficiency, or other environmental metrics.                      | Exceptional evidence of environmental improvements. The initiative shows transformative outcomes, setting benchmarks for carbon reduction, resource optimization, and biodiversity enhancement.                      |
| Resource Utilization and Operational Efficiency | Minimal or no evidence of effective resource utilization or operational efficiency. Little to no impact on cost savings, revenue generation, or resource optimization.                             | Moderate improvement in resource utilization and operational efficiency. Some evidence of cost savings or operational improvements, but these are not widespread or significant. | Strong improvement in resource utilization and operational efficiency. Clear, measurable benefits such as significant cost savings, enhanced revenue, or operational improvements across the initiative. | Outstanding achievements in resource utilization and operational efficiency. The initiative consistently maximizes resource use and operational performance, leading to substantial cost savings and revenue growth. |
| Reach and Influence                             | Limited reach and influence. The initiative has minimal engagement with stakeholders and has not significantly increased community awareness of environmental practices.                           | Moderate reach and influence. The initiative engages a fair number of stakeholders and has moderately increased community awareness and participation.                           | Strong reach and influence. The initiative is well-recognized within communities and organizations, significantly boosting environmental awareness and stakeholder engagement.                           | Exceptional reach and influence. The initiative is a leader in driving environmental awareness and action, with extensive stakeholder engagement and community involvement.  |

## Impact and Outcomes - Rating Scale (2-2)

| Assessment Elements                        | 25% - 0%  | 50% - 26%   | 75% - 51%  | 100% - 76%  |
|--|---|---|--|---|
| Stakeholder Impact and Knowledge Exchange  | Minimal impact on stakeholders, with limited evidence of satisfaction or successful knowledge exchange. Initiatives show negligible improvements in environmental practices among partners. | Moderate impact on stakeholders, with some evidence of satisfaction and knowledge exchange. Initiatives lead to moderate improvements in environmental practices among a small group of partners. | Significant impact on stakeholders, with clear evidence of high satisfaction and successful knowledge exchange. Initiatives result in noticeable improvements in environmental practices across a broader group of partners. | Exceptional impact on stakeholders, with widespread satisfaction and successful knowledge exchange. Initiatives transform environmental practices, leading to major improvements and innovation adoption among all partners.  |
| Awards, Recognition, and Capacity Building | Limited recognition or awards; minimal capacity-building efforts with negligible outcomes in enhancing environmental sustainability.  | Moderate recognition or a few awards; some capacity-building efforts such as occasional training sessions or certifications that somewhat enhance environmental sustainability.                   | Significant recognition with several awards; substantial capacity-building efforts including regular training sessions and certifications that clearly enhance environmental sustainability.                                 | Exceptional recognition with numerous prestigious awards; extensive capacity-building efforts including comprehensive training programs, widespread certifications, and active knowledge-sharing that significantly enhance environmental sustainability across the community and beyond. |

# Appendix E:

## Reference

|   | SDG Name                                 | SDG Brief Description  |
|---|--|--|
| United Nations Sustainable Development Goals (SDGs) | No Poverty                               | End poverty in all its forms everywhere.   |
|   | Zero Hunger                              | End hunger, achieve food security, improve nutrition, and promote sustainable agriculture.   |
|   | Good Health and Well-being               | Ensure healthy lives and promote well-being for all at all ages.   |
|   | Quality Education                        | Ensure inclusive and equitable quality education and promote lifelong learning opportunities for all.  |
|   | Gender Equality                          | Achieve gender equality and empower all women and girls.   |
|   | Clean Water and Sanitation               | Ensure availability and sustainable management of water and sanitation for all.  |
|   | Affordable and Clean Energy              | Ensure access to affordable, reliable, sustainable, and modern energy for all.   |
|   | Decent Work and Economic Growth          | Promote sustained, inclusive, and sustainable economic growth, full and productive employment, and decent work for all.                      |
|   | Industry, Innovation, and Infrastructure | Build resilient infrastructure, promote inclusive and sustainable industrialization, and foster innovation.                                  |
|   | Reduced Inequalities                     | Reduce inequality within and among countries.  |
|   | Sustainable Cities and Communities       | Make cities and human settlements inclusive, safe, resilient, and sustainable.   |
|   | Responsible Consumption and Production   | Ensure sustainable consumption and production patterns.  |
|   | Climate Action                           | Take urgent action to combat climate change and its impacts.   |
|   | Life Below Water                         | Conserve and sustainably use the oceans, seas, and marine resources.   |
|   | Life on Land                             | Protect, restore, and promote sustainable use of terrestrial ecosystems, manage forests, combat desertification, and halt biodiversity loss. |
|   | Peace, Justice, and Strong Institutions  | Promote peaceful and inclusive societies, provide access to justice for all, and build effective, accountable institutions.                  |
|   | Partnerships for the Goals               | Strengthen the means of implementation and revitalize the global partnership for sustainable development.                                    |

|   | Strategy/Direction Title                              | Strategy/Direction Description  |
|---|---|---|
| UAE Sustainability and Environmental Strategies/ Directions | UAE Net Zero by 2050 Strategic Initiative             | The UAE's pledge to net-zero emissions by 2050, investing \$163B in solar, nuclear, and waste-to-energy technologies.         |
|   | UAE Energy Strategy 2050                              | Targets 50% clean energy and a 70% carbon footprint reduction while ensuring economic and environmental balance.              |
|   | National Framework for Sustainable Development (2023) | Unifies national strategies for sustainability, focusing on quality of life, biodiversity, and economic growth.               |
|   | Abu Dhabi Climate Change Strategy                     | Aims to cut emissions, boost renewables, and strengthen climate resilience in Abu Dhabi.                                      |
|   | National Air Quality Agenda 2031                      | Seeks cleaner air by reducing industrial, transport, and energy-related pollution through monitoring and regulations.         |
|   | The UAE's Green Agenda 2030                           | Advances a green economy by integrating sustainability into policies, clean energy, and eco-friendly industries.              |
|   | UAE Circular Economy Policy 2031                      | Promotes waste reduction, recycling, and sustainable production through responsible supply chains and eco-friendly practices. |
|   | Environment Vision 2030 (Abu Dhabi)                   | Integrates sustainability in Abu Dhabi, covering climate adaptation, air and water quality, and biodiversity protection.      |
|   | Dubai Integrated Energy Strategy 2030                 | Expands Dubai's clean energy to 29% and cuts energy demand by 30%.  |
|   | Dubai Demand Side Management Strategy                 | Targets a 30% drop in energy and water use in Dubai by 2030.  |
|   | UAE Water Security Strategy 2036                      | Ensures sustainable water access through supply enhancements, demand reductions, and scarcity preparedness.                   |
|   | UAE Sustainable Fisheries Program                     | Regulates fishing, protects marine life, and promotes aquaculture.  |
|   | National Strategy for Integrated Waste Management     | Focuses on waste reduction, recycling, and waste-to-energy projects.  |
|   | UAE National Biodiversity Strategy and Action Plan    | Protects ecosystems, restores habitats, and promotes conservation.  |
|   | UAE National Strategy for Sustainable Agriculture     | Enhances food security via modern farming, water efficiency, and organic agriculture.   |
|   | Other   | Applicants can also refer to other UAE strategies and directions if not listed here.  |



|   | Regulation/Agreement   | Description   |
|---|--|---|
| <b>Key examples of national (Federal) environmental regulations</b> | UAE Climate Change Law (2023)                                      | The first climate-specific law in the region, supporting net-zero efforts, carbon trading, and sustainability governance. |
|   | UAE Federal Law No. 12 of 2018 on Integrated Waste Management      | Establishes waste management policies, promotes recycling, and regulates hazardous waste disposal.                        |
|   | UAE Federal Law No. 20 of 2006 on the Use of Radioactive Materials | Regulates the safe handling, transportation, and disposal of radioactive materials to prevent contamination.              |
|   | UAE National Adaptation Program                                    | Integrates climate adaptation measures into key economic sectors, ensuring resilience to climate change.                  |
|   | UAE Cabinet Decision No. 37 of 2001 on Air Pollution Control       | Establishes air quality standards and emissions limits to control industrial and vehicular air pollution.                 |
|   | Other  | Organizations may also adhere to additional UAE-specific environmental laws & regulations.                                |

|  | Regulation/Agreement   | Description   |
|--|--|---|
| <b>Key Examples of International Environmental Regulations</b> | Basel Convention on Hazardous Waste                          | Regulates the transboundary movement and disposal of hazardous waste, preventing illegal dumping.           |
|  | Stockholm Convention on Persistent Organic Pollutants (POPs) | Limits the production and use of harmful pollutants to protect human health and the environment.            |
|  | Montreal Protocol on Ozone Protection                        | Regulates substances that deplete the ozone layer, including the phase-out of harmful refrigerants.         |
|  | Convention on Biological Diversity (CBD)                     | Supports biodiversity conservation, sustainable ecosystem management, and fair use of biological resources. |
|  | International Maritime Organization (IMO) MARPOL Convention  | Regulates pollution from ships, including oil spills, sewage discharge, and plastic waste prevention.       |
|  | ISO 14001 – Environmental Management Systems                 | International standard ensuring organizations implement effective sustainability practices.                 |
|  | Global Reporting Initiative (GRI) Standards                  | Framework for transparent sustainability and environmental performance reporting.                           |
|  | Task Force on Climate-Related Financial Disclosures (TCFD)   | Provides guidelines for disclosing climate-related risks and opportunities in financial reporting.          |
|  | Other  | Organizations may also comply with other relevant international environmental frameworks.                   |

|   | Challenge                                      | Description   |
|---|--|---|
| <b>Key Global Sustainability and Environmental Challenges</b> | Climate Change                                 | Rising global temperatures due to greenhouse gas emissions, leading to extreme weather, sea-level rise, and ecosystem disruptions.            |
|   | Biodiversity Loss                              | Rapid extinction of species and destruction of ecosystems due to deforestation, habitat destruction, pollution, and climate change.           |
|   | Air Pollution                                  | Increased levels of pollutants from industrial activities, transportation, and agriculture, causing health problems and environmental damage. |
|   | Water Scarcity                                 | Growing demand and pollution of freshwater sources, threatening drinking water supplies and agriculture.                                      |
|   | Ocean Pollution                                | Marine debris, plastics, and oil spills affecting marine life and disrupting ecosystems.  |
|   | Deforestation                                  | Large-scale clearing of forests for agriculture, urbanization, and industrial use, leading to habitat loss and climate imbalance.             |
|   | Soil Degradation & Desertification             | Overuse of land, deforestation, and poor agricultural practices reducing soil fertility and expanding deserts.                                |
|   | Waste Management & Plastic Pollution           | Excessive waste production, lack of recycling, and microplastic pollution harming ecosystems and human health.                                |
|   | Ozone Layer Depletion                          | Damage caused by chemicals (e.g., CFCs), leading to increased UV radiation and risks to human health and the environment.                     |
|   | Unsustainable Consumption & Production         | Over-extraction of natural resources and inefficient industrial practices leading to environmental degradation.                               |
|   | Food Security & Agricultural Sustainability    | Rising population and climate impacts threatening food production, requiring sustainable farming practices.                                   |
|   | Energy Sustainability                          | Over-reliance on fossil fuels and slow transition to clean energy causing climate and pollution issues.                                       |
|   | Environmental Health Risks                     | Pollution, chemical exposure, and ecosystem destruction impacting human health and increasing disease risks.                                  |
|   | Loss of Indigenous Knowledge & Practices       | Declining recognition of traditional environmental practices that support biodiversity and ecosystem sustainability.                          |
|   | Weak Environmental Governance & Accountability | Insufficient regulations, enforcement, and corporate responsibility leading to unsustainable practices.                                       |
|   | <b>Other</b>                                   | <b>Additional environmental or sustainability challenges not listed here may also be considered.</b>  |

|  | Priority   | Description   |
|--|--|---|
| Key Internationally Agreed Sustainability and Environmental Priorities | United Nations Sustainable Development Goals (SDGs)            | A global blueprint of <b>17 goals</b> to address climate change, environmental protection, economic growth, and social equity, applicable to all nations. |
|  | Paris Agreement (Climate Action)                               | A legally binding international treaty aiming to <b>limit global warming to below 2°C</b> , with net-zero emissions targets for all countries.            |
|  | Global Biodiversity Framework (Kunming-Montreal 2022)          | A UN-led plan to <b>halt and reverse biodiversity loss by 2030</b> , setting conservation targets for land and oceans.                                    |
|  | Montreal Protocol (Ozone Protection)                           | A global agreement to <b>phase out ozone-depleting substances</b> , protecting the ozone layer and reducing climate impact.                               |
|  | Basel Convention (Hazardous Waste Management)                  | Controls the international trade and disposal of <b>hazardous and electronic waste</b> , ensuring responsible waste management.                           |
|  | Stockholm Convention (Persistent Organic Pollutants - POPs)    | Regulates <b>toxic chemicals</b> that persist in the environment and harm human health and ecosystems.  |
|  | MARPOL (Marine Pollution Prevention by IMO)                    | A global maritime agreement to <b>prevent pollution from ships</b> , including oil spills, plastic waste, and chemical discharge.                         |
|  | United Nations Framework Convention on Climate Change (UNFCCC) | The foundational framework for global climate agreements, including <b>COP conferences and net-zero goals</b> .   |
|  | Convention on Biological Diversity (CBD)                       | A global commitment to <b>protect ecosystems, restore habitats, and conserve species</b> under international law.   |
|  | United Nations Decade on Ecosystem Restoration (2021-2030)     | A global initiative to <b>restore degraded land, forests, oceans, and rivers</b> to combat biodiversity loss and climate change.                          |
|  | Circular Economy Principles (by UNEP & EU)                     | A push for <b>sustainable production, recycling, and resource efficiency</b> to minimize environmental impact.  |
|  | UN Water Action Decade (2018-2028)                             | A commitment to <b>ensure global water security</b> , improve water quality, and promote sustainable water management.                                    |
|  | UNEP Global Plastics Treaty (in progress)                      | An upcoming international legally binding agreement to <b>end plastic pollution worldwide</b> by 2040.  |
|  | One Health Approach (WHO, FAO, UNEP, WOAHA)                    | Recognizes the interconnectedness of <b>human health, animal health, and environmental sustainability</b> in policymaking.                                |
|  | ESG (Environmental, Social, Governance) Standards              | A global corporate sustainability framework requiring companies to <b>report environmental and social impact</b> transparently.                           |



|   | KPI  | Description  |
|---|--|--|
| <b>Examples of Environmental KPIs Within an Organization</b><br><br><b>(Performance - Specific Reference Table)</b> | Carbon Footprint (CO <sub>2</sub> Emissions per Ton of Output)               | Measures total CO <sub>2</sub> emissions per unit of production, including Scope 1, 2, and 3 emissions.                |
|   | Energy Use Intensity (EUI) (kWh/m <sup>2</sup> or kWh/unit of production)    | Tracks energy consumption per square meter or per unit of production to assess efficiency.                             |
|   | Renewable Energy Share (%)   | Percentage of total energy consumption sourced from renewable energy.  |
|   | Water Consumption per Unit of Production (m <sup>3</sup> /unit)              | Measures total water usage per unit of output to track efficiency.   |
|   | Water Discharge Rate (m <sup>3</sup> /day or % of Total Water Used)          | Tracks the volume of wastewater discharged and its compliance with regulations.  |
|   | Waste Diversion Rate (WDR) (%)   | Percentage of waste diverted from landfills through recycling, composting, or reuse.                                   |
|   | Hazardous Waste Generated (kg/unit of production)                            | Measures the quantity of hazardous waste produced per unit of output.  |
|   | Air Pollutant Emissions (kg NO <sub>x</sub> , SO <sub>x</sub> , PM per year) | Tracks emissions of nitrogen oxides (NO <sub>x</sub> ), sulfur oxides (SO <sub>x</sub> ), and particulate matter (PM). |
|   | VOC Emissions (kg/year)  | Measures emissions of volatile organic compounds (VOCs), commonly from industrial processes.                           |
|   | Recycled Material Use (%)  | Percentage of raw materials sourced from recycled or repurposed materials.   |
|   | Sustainable Procurement (%)  | Measures the percentage of purchases meeting sustainability criteria (e.g., certified eco-friendly materials).         |
|   | Land Use Impact (Hectares Affected/Restored)                                 | Tracks the organization's land development and restoration efforts.  |
|   | Water Reuse Rate (%)   | Percentage of water reused or recycled within the organization's operations.   |
|   | Supply Chain Carbon Footprint (kg CO <sub>2</sub> per product transported)   | Measures emissions from logistics and supplier networks.   |
|   | Carbon Offsets Purchased (Ton CO <sub>2</sub> Offset/Year)                   | Tracks carbon credits or other initiatives used to neutralize emissions.   |
|   | Fleet Fuel Efficiency (L/100 km or kg CO <sub>2</sub> /km)                   | Measures fuel consumption and CO <sub>2</sub> emissions per distance traveled for company vehicles.                    |
|   | Employee Environmental Training Participation (%)                            | Percentage of employees who complete sustainability training programs.   |
|   | LEED or Green Building Certification Status                                  | Tracks certification levels for environmentally sustainable buildings.   |
|   | Noise Pollution Levels (dB near facilities)                                  | Measures noise levels in areas surrounding company operations.   |
|   | <b>Other</b>   | <b>The above are examples; organizations may use different or additional KPIs based on their sustainability goals.</b> |





Environment Agency - Abu Dhabi - Tel.: +971 2 693 4764

[www.ead.gov.ae](http://www.ead.gov.ae) | [SHEA@ead.gov.ae](mailto:SHEA@ead.gov.ae)



EnvironmentAbuDhabi



EADTweets



The Environment Agency Abu Dhabi